

Flotillin 1 Rabbit mAb

Catalog # AP75443

Product Information

| | |
|--------------------------|------------------------|
| Application | WB, IP, ICC |
| Primary Accession | O75955 |
| Reactivity | Human |
| Host | Rabbit |
| Clonality | Monoclonal Antibody |
| Calculated MW | 47355 |

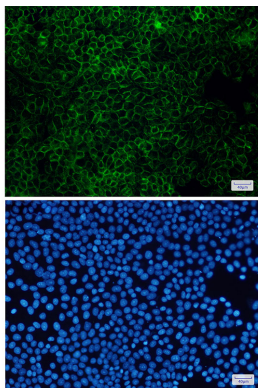
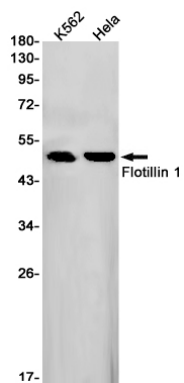
Additional Information

| | |
|--------------------|---|
| Gene ID | 10211 |
| Other Names | FLOT1 |
| Dilution | WB~~1/500-1/1000 IP~~N/A ICC~~N/A |
| Format | 50mM Tris-Glycine(pH 7.4), 0.15M NaCl, 40%Glycerol, 0.01% sodium azide and 0.05% BSA. |

Protein Information

| | |
|--------------------------|---|
| Name | FLOT1 |
| Function | May act as a scaffolding protein within caveolar membranes, functionally participating in formation of caveolae or caveolae-like vesicles. |
| Cellular Location | Cell membrane; Peripheral membrane protein. Endosome Membrane, caveola {ECO:0000250 UniProtKB:O08917}; Peripheral membrane protein {ECO:0000250 UniProtKB:O08917}. Melanosome. Membrane raft. Note=Identified by mass spectrometry in melanosome fractions from stage I to stage IV (PubMed:17081065) Membrane-associated protein of caveola (By similarity) {ECO:0000250 UniProtKB:O08917, ECO:0000269 PubMed:17081065} |

Images



Please note: All products are 'FOR RESEARCH USE ONLY. NOT FOR USE IN DIAGNOSTIC OR THERAPEUTIC PROCEDURES'.