

Folate Binding Protein Rabbit mAb

Catalog # AP75447

Product Information

| | |
|--------------------------|------------------------|
| Application | WB, IHC-P |
| Primary Accession | P15328 |
| Reactivity | Human |
| Host | Rabbit |
| Clonality | Monoclonal Antibody |
| Calculated MW | 29819 |

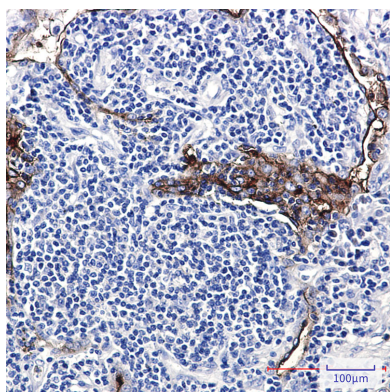
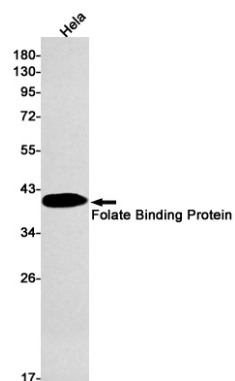
Additional Information

| | |
|--------------------|-----------------------------|
| Gene ID | 2348 |
| Other Names | FOLR1 |
| Dilution | WB~~1/500-1/1000 IHC-P~~N/A |
| Format | Liquid |

Protein Information

| | |
|--------------------------|---|
| Name | FOLR1 |
| Synonyms | FOLR |
| Function | Binds to folate and reduced folic acid derivatives and mediates delivery of 5-methyltetrahydrofolate and folate analogs into the interior of cells (PubMed: 19074442 , PubMed: 23851396 , PubMed: 23934049 , PubMed: 2527252 , PubMed: 8033114 , PubMed: 8567728). Has high affinity for folate and folic acid analogs at neutral pH (PubMed: 23851396 , PubMed: 23934049 , PubMed: 2527252 , PubMed: 8033114 , PubMed: 8567728). Exposure to slightly acidic pH after receptor endocytosis triggers a conformation change that strongly reduces its affinity for folates and mediates their release (PubMed: 8567728). Required for normal embryonic development and normal cell proliferation (By similarity). |
| Cellular Location | Cell membrane; Lipid-anchor, GPI-anchor Apical cell membrane; Lipid-anchor, GPI- anchor Basolateral cell membrane; Lipid-anchor, GPI-like-anchor. Secreted Cytoplasmic vesicle. Cytoplasmic vesicle, clathrin-coated vesicle. Endosome. Note=Endocytosed into cytoplasmic vesicles and then recycled to the cell membrane |
| Tissue Location | Primarily expressed in tissues of epithelial origin. Expression is increased in malignant tissues. Expressed in kidney, lung and cerebellum. Detected in placenta and thymus epithelium. |

Images



Please note: All products are 'FOR RESEARCH USE ONLY. NOT FOR USE IN DIAGNOSTIC OR THERAPEUTIC PROCEDURES'.