

Galectin 3 Rabbit mAb

Catalog # AP75473

Product Information

Application	WB, FC
Primary Accession	P17931
Reactivity	Rat, Human
Host	Rabbit
Clonality	Monoclonal Antibody
Isotype	IgG
Conjugate	Unconjugated
Purification	Affinity Purified
Calculated MW	26 KDa

Additional Information

Other Names	LGALS3
Dilution	WB~~1:1000-1:5000 FC~~1:20-1:100
Format	Liquid in 50mM Tris-Glycine(pH 7.4), 0.15M NaCl, 40%Glycerol, 0.01% sodium azide and 0.05% BSA.
Storage	Store at 4°C short term. Aliquot and store at -20°C long term. Avoid freeze/thaw cycles.

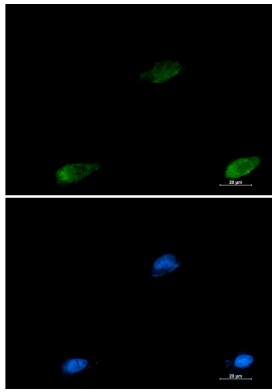
Protein Information

Background

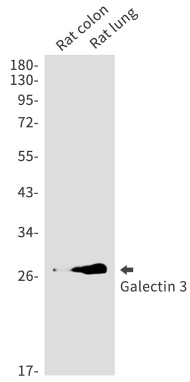
Galactose-specific lectin which binds IgE. May mediate with the alpha-3, beta-1 integrin the stimulation by CSPG4 of endothelial cells migration. Together with DMBT1, required for terminal differentiation of columnar epithelial cells during early embryogenesis.

Images

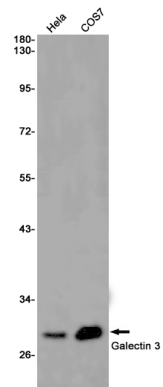
Immunocytochemistry analysis of Galectin 3 (green) in U87-MG using Galectin 3 antibody, and DAPI(blue).



Western blot analysis of Galectin 3 in rat colon, rat lung lysates using Galectin 3 antibody.



Western blot analysis of Galectin 3 in HeLa, COS7 lysates using Galectin 3 antibody



Please note: All products are 'FOR RESEARCH USE ONLY. NOT FOR USE IN DIAGNOSTIC OR THERAPEUTIC PROCEDURES'.