

Galectin 3 Rabbit mAb

Catalog # AP75474

Product Information

Application	WB, IHC-P, IHC-F, IP, ICC
Primary Accession	P17931
Reactivity	Human
Host	Rabbit
Clonality	Monoclonal Antibody
Calculated MW	26152

Additional Information

Gene ID	3958
Other Names	LGALS3
Dilution	WB~~1/500-1/1000 IHC-P~~N/A IHC-F~~N/A IP~~N/A ICC~~N/A
Format	50mM Tris-Glycine(pH 7.4), 0.15M NaCl, 40%Glycerol, 0.01% sodium azide and 0.05% BSA.
Storage	Store at 4°C short term. Aliquot and store at -20°C long term. Avoid freeze/thaw cycles.

Protein Information

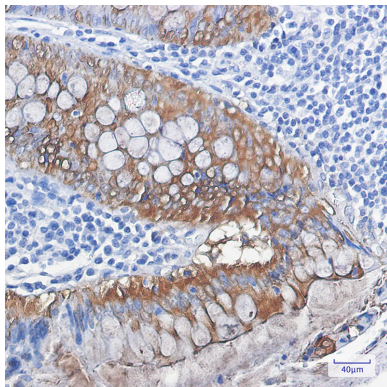
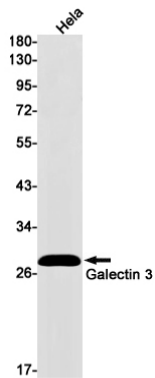
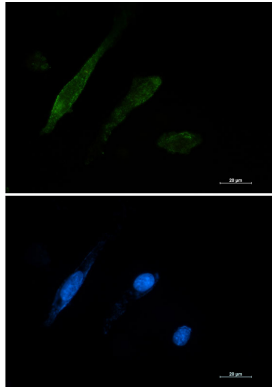
Name	LGALS3 (HGNC:6563)
Synonyms	MAC2
Function	Galactose-specific lectin which binds IgE. May mediate with the alpha-3, beta-1 integrin the stimulation by CSPG4 of endothelial cells migration. Together with DMBT1, required for terminal differentiation of columnar epithelial cells during early embryogenesis (By similarity). In the nucleus: acts as a pre-mRNA splicing factor. Involved in acute inflammatory responses including neutrophil activation and adhesion, chemoattraction of monocytes macrophages, opsonization of apoptotic neutrophils, and activation of mast cells. Together with TRIM16, coordinates the recognition of membrane damage with mobilization of the core autophagy regulators ATG16L1 and BECN1 in response to damaged endomembranes.
Cellular Location	Cytoplasm. Nucleus. Secreted. Note=Secreted by a non- classical secretory pathway and associates with the cell surface. Can be secreted; the secretion is dependent on protein unfolding and facilitated by the cargo receptor TMED10; it results in protein translocation from the cytoplasm into the ERGIC (endoplasmic reticulum- Golgi intermediate compartment) followed by vesicle

entry and secretion (PubMed:32272059).

Tissue Location

A major expression is found in the colonic epithelium. It is also abundant in the activated macrophages. Expressed in fetal membranes.

Images



Please note: All products are 'FOR RESEARCH USE ONLY. NOT FOR USE IN DIAGNOSTIC OR THERAPEUTIC PROCEDURES'.