

Glucose Transporter GLUT3 Rabbit mAb

Catalog # AP75495

Product Information

Application	WB
Primary Accession	P11169
Reactivity	Human, Mouse, Rat
Host	Rabbit
Clonality	Monoclonal Antibody
Calculated MW	53924

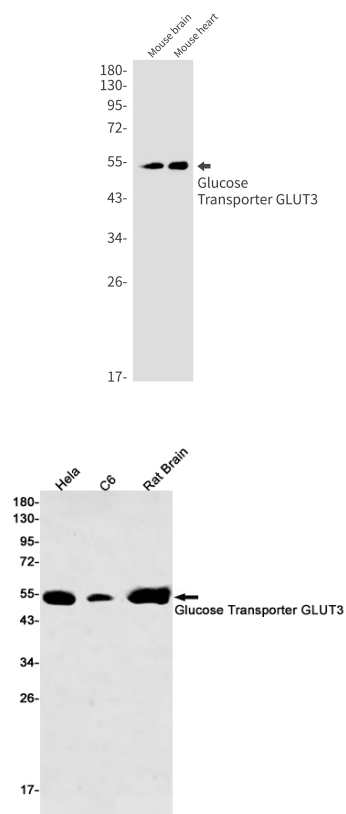
Additional Information

Gene ID	6515
Other Names	SLC2A3
Dilution	WB~~1/500-1/1000
Format	50mM Tris-Glycine(pH 7.4), 0.15M NaCl, 40%Glycerol, 0.01% sodium azide and 0.05% BSA.
Storage	Store at 4°C short term. Aliquot and store at -20°C long term. Avoid freeze/thaw cycles.

Protein Information

Name	SLC2A3 (HGNC:11007)
Function	Facilitative glucose transporter (PubMed: 26176916 , PubMed: 32860739 , PubMed: 9477959). Can also mediate the uptake of various other monosaccharides across the cell membrane (PubMed: 26176916 , PubMed: 9477959). Mediates the uptake of glucose, 2- deoxyglucose, galactose, mannose, xylose and fucose, and probably also dehydroascorbate (PubMed: 26176916 , PubMed: 9477959). Does not mediate fructose transport (PubMed: 26176916 , PubMed: 9477959). Required for mesendoderm differentiation (By similarity).
Cellular Location	Cell membrane; Multi-pass membrane protein. Perikaryon {ECO:0000250 UniProtKB:Q07647}. Cell projection {ECO:0000250 UniProtKB:Q07647}. Note=Localized to densely spaced patches along neuronal processes. {ECO:0000250 UniProtKB:Q07647}
Tissue Location	Highly expressed in brain (PubMed:8457197). Expressed in many tissues.

Images



Please note: All products are 'FOR RESEARCH USE ONLY. NOT FOR USE IN DIAGNOSTIC OR THERAPEUTIC PROCEDURES'.