

Glutaminase Rabbit mAb

Catalog # AP75496

Product Information

Application	WB, IP, ICC
Primary Accession	O94925
Reactivity	Human, Mouse, Rat
Host	Rabbit
Clonality	Monoclonal Antibody
Calculated MW	73461

Additional Information

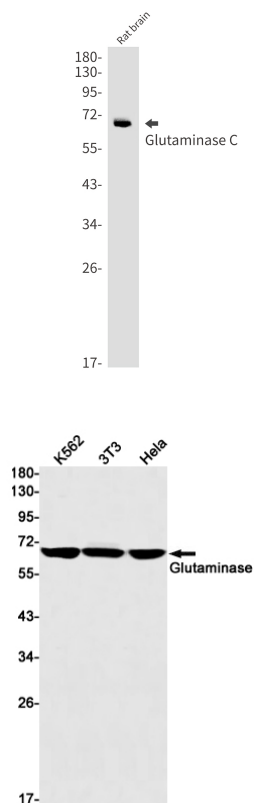
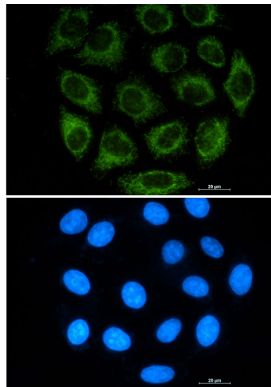
Gene ID	2744
Other Names	GLS
Dilution	WB~~1/500-1/1000 IP~~1/20 ICC~~N/A
Format	50mM Tris-Glycine(pH 7.4), 0.15M NaCl, 40%Glycerol, 0.01% sodium azide and 0.05% BSA.
Storage	Store at 4°C short term. Aliquot and store at -20°C long term. Avoid freeze/thaw cycles.

Protein Information

Name	GLS
Synonyms	GLS1, KIAA0838
Function	Catalyzes the first reaction in the primary pathway for the renal catabolism of glutamine. Plays a role in maintaining acid-base homeostasis. Regulates the levels of the neurotransmitter glutamate, the main excitatory neurotransmitter in the brain (PubMed: 30239721 , PubMed: 30575854 , PubMed: 30970188).
Cellular Location	[Isoform 1]: Mitochondrion {ECO:0000250 UniProtKB:P13264}. Cytoplasm, cytosol. Note=The 74-kDa cytosolic precursor is translocated into the mitochondria and processed via a 72-kDa intermediate to yield the mature 68- and 65-kDa subunits {ECO:0000250 UniProtKB:P13264} [Glutaminase kidney isoform, mitochondrial 68 kDa chain]: Mitochondrion matrix {ECO:0000250 UniProtKB:P13264} Note=Produced by the proteolytic processing of the 74-kDa cytosolic precursor. {ECO:0000250 UniProtKB:P13264}
Tissue Location	Isoform 1 and isoform 3 are detected in brain cortex. Isoform 3 is highly

expressed in astrocytoma, ganglioglioma and ependymoma. Isoform 1 is highly expressed in brain and kidney, but not detected in liver. Isoform 3 is highly expressed in heart and pancreas, detected at lower levels in placenta, lung, pancreas and kidney, but is not detected in liver. Isoform 2 is expressed in cardiac and skeletal muscle.

Images



Please note: All products are 'FOR RESEARCH USE ONLY. NOT FOR USE IN DIAGNOSTIC OR THERAPEUTIC PROCEDURES'.