

HP1 alpha Rabbit mAb

Catalog # AP75569

Product Information

Application	WB, IHC-P, IHC-F, FC, IP
Primary Accession	P45973
Reactivity	Rat, Human, Mouse
Host	Rabbit
Clonality	Monoclonal Antibody
Isotype	IgG
Conjugate	Unconjugated
Purification	Affinity Purified
Calculated MW	22 KDa

Additional Information

Other Names	CBX5
Dilution	WB~~1:500-1:1000 IHC-P~~N/A IHC-F~~N/A FC~~1:10-1:100 IP~~1:10-1:100
Format	Liquid in 50mM Tris-Glycine(pH 7.4), 0.15M NaCl, 40%Glycerol, 0.01% sodium azide and 0.05% BSA.
Storage	Store at 4°C short term. Aliquot and store at -20°C long term. Avoid freeze/thaw cycles.

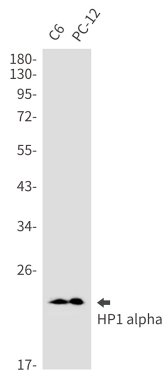
Protein Information

Background

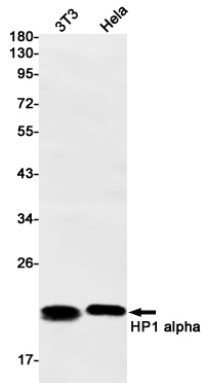
Component of heterochromatin that recognizes and binds histone H3 tails methylated at 'Lys-9' (H3K9me), leading to epigenetic repression. In contrast, it is excluded from chromatin when 'Tyr-41' of histone H3 is phosphorylated (H3Y41ph). Can interact with lamin-B receptor (LBR). This interaction can contribute to the association of the heterochromatin with the inner nuclear membrane. Involved in the formation of functional kinetochore through interaction with MIS12 complex proteins.

Images

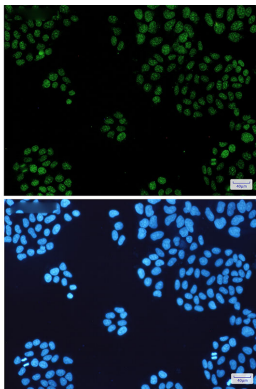
Western blot analysis of HP1 alpha in C6, PC-12 lysates using HP1 alpha antibody.



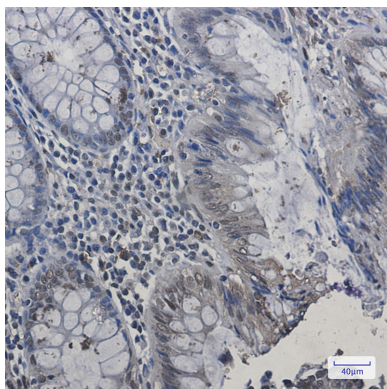
Western blot analysis of HP1 alpha in 3T3, Hela lysates using HP1 alpha antibody.

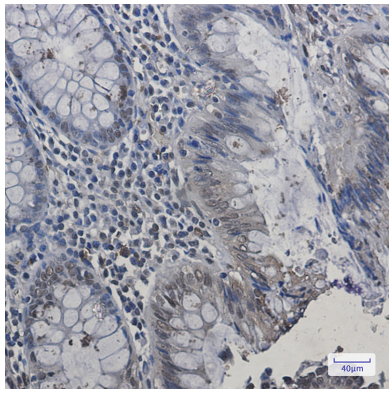


Immunocytochemistry analysis of HP1 alpha(green) in Hela using HP1 alpha antibody, and DAPI(blue)



Immunohistochemistry analysis of paraffin-embedded Human colon cancer using HP1 alpha antibody. High-pressure and temperature Sodium Citrate pH 6.0 was used for antigen retrieval.





Please note: All products are 'FOR RESEARCH USE ONLY. NOT FOR USE IN DIAGNOSTIC OR THERAPEUTIC PROCEDURES'.