

# HP1 gamma Rabbit mAb

Catalog # AP75571

## Product Information

---

Application	WB, IHC-P, IP
Primary Accession	<a href="#">Q13185</a>
Reactivity	Human
Host	Rabbit
Clonality	Monoclonal Antibody
Calculated MW	20811

## Additional Information

---

Gene ID	11335
Other Names	CBX3
Dilution	WB~~1/500-1/1000 IHC-P~~N/A IP~~N/A
Format	50mM Tris-Glycine(pH 7.4), 0.15M NaCl, 40%Glycerol, 0.01% sodium azide and 0.05% BSA.
Storage	Store at 4°C short term. Aliquot and store at -20°C long term. Avoid freeze/thaw cycles.

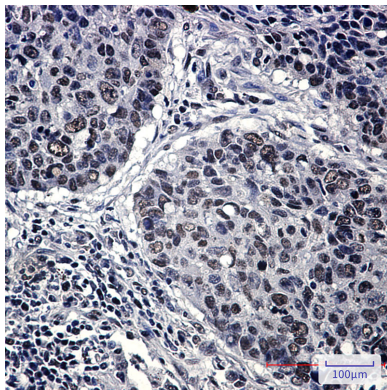
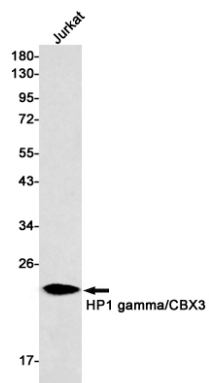
## Protein Information

---

Name	CBX3
Function	<p>Component of heterochromatin, which recognizes and binds histone H3 tails methylated at 'Lys-9', leading to epigenetic repression (PubMed:<a href="#">11242053</a>). Also recognizes and binds histone H1.4 methylated at 'Lys-26' (H1.4K26me) (PubMed:<a href="#">16127177</a>). Excluded from chromatin when histone H1.4 is Simultaneously methylated at Lys-26 (H1.4K26me) and phosphorylated at Ser-27 (H1.4S27Ph) (PubMed:<a href="#">16127177</a>). Involved in the formation of functional kinetochore through interaction with MIS12 complex proteins (PubMed:<a href="#">15502821</a>). Contributes to the conversion of local chromatin to a heterochromatin-like repressive state through H3 'Lys-9' trimethylation, mediates the recruitment of the methyltransferases SUV39H1 and/or SUV39H2 by the PER complex to the E-box elements of the circadian target genes such as PER2 itself or PER1 (By similarity). Mediates the recruitment of NIPBL to sites of DNA damage at double-strand breaks (DSBs) (PubMed:<a href="#">28167679</a>).</p>
Cellular Location	Nucleus. Note=Associates with euchromatin and is largely excluded from constitutive heterochromatin. May be associated with microtubules and mitotic poles during mitosis (Potential).

## Images

---



Please note: All products are 'FOR RESEARCH USE ONLY. NOT FOR USE IN DIAGNOSTIC OR THERAPEUTIC PROCEDURES'.