

# Phospho-IKB alpha (Ser36) Rabbit mAb

Catalog # AP75604

## Product Information

---

Application	WB
Primary Accession	<a href="#">P25963</a>
Reactivity	Human, Mouse
Host	Rabbit
Clonality	Monoclonal Antibody
Calculated MW	35609

## Additional Information

---

Gene ID	4792
Other Names	NFKBIA
Dilution	WB~~1/500-1/1000
Format	50mM Tris-Glycine(pH 7.4), 0.15M NaCl, 40%Glycerol, 0.01% sodium azide and 0.05% BSA.

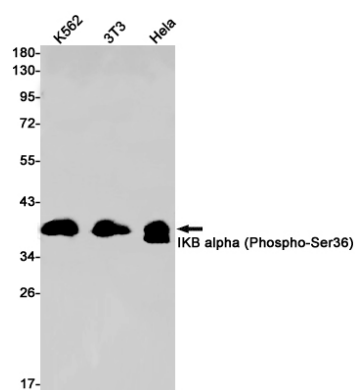
## Protein Information

---

Name	NFKBIA
Synonyms	IKBA, MAD3, NFKBI
Function	Inhibits the activity of dimeric NF-kappa-B/REL complexes by trapping REL (RELA/p65 and NFKB1/p50) dimers in the cytoplasm by masking their nuclear localization signals (PubMed: <a href="#">1493333</a> , PubMed: <a href="#">36651806</a> , PubMed: <a href="#">7479976</a> ). On cellular stimulation by immune and pro-inflammatory responses, becomes phosphorylated promoting ubiquitination and degradation, enabling the dimeric RELA to translocate to the nucleus and activate transcription (PubMed: <a href="#">7479976</a> , PubMed: <a href="#">7628694</a> , PubMed: <a href="#">7796813</a> , PubMed: <a href="#">7878466</a> ).
Cellular Location	Cytoplasm. Nucleus. Note=Shuttles between the nucleus and the cytoplasm by a nuclear localization signal (NLS) and a CRM1-dependent nuclear export.

## Images

---



Please note: All products are 'FOR RESEARCH USE ONLY. NOT FOR USE IN DIAGNOSTIC OR THERAPEUTIC PROCEDURES'.