

# KIFC1 Rabbit mAb

Catalog # AP75654

## Product Information

---

<b>Application</b>	WB, IHC-P, IHC-F, FC, IP
<b>Primary Accession</b>	<a href="#">Q9BW19</a>
<b>Reactivity</b>	Human
<b>Host</b>	Rabbit
<b>Clonality</b>	Monoclonal Antibody
<b>Isotype</b>	IgG
<b>Conjugate</b>	Unconjugated
<b>Purification</b>	Affinity Purified
<b>Calculated MW</b>	73748

## Additional Information

---

<b>Gene ID</b>	3833
<b>Other Names</b>	KIFC1
<b>Dilution</b>	WB~~1:1000-1:5000 IHC-P~~N/A IHC-F~~N/A FC~~1:20-1:50 IP~~1:10-1:100
<b>Format</b>	Liquid in 50mM Tris-Glycine(pH 7.4), 0.15M NaCl, 40%Glycerol, 0.01% sodium azide and 0.05% BSA.
<b>Storage</b>	Store at 4°C short term. Aliquot and store at -20°C long term. Avoid freeze/thaw cycles.

## Protein Information

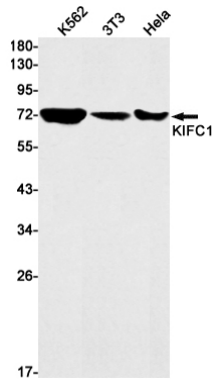
---

<b>Name</b>	KIFC1
<b>Synonyms</b>	HSET, KNSL2
<b>Function</b>	Minus end-directed microtubule-dependent motor required for bipolar spindle formation (PubMed: <a href="#">15843429</a> ). May contribute to movement of early endocytic vesicles (By similarity). Regulates cilium formation and structure (By similarity).
<b>Cellular Location</b>	Nucleus {ECO:0000250 UniProtKB:Q9QWT9}. Cytoplasm, cytoskeleton, microtubule organizing center, centrosome {ECO:0000250 UniProtKB:Q9QWT9}. Cytoplasm, cytoskeleton, spindle {ECO:0000250 UniProtKB:Q9QWT9}. Early endosome {ECO:0000250 UniProtKB:Q9QWT9}. Note=Associated with nucleus during interphase, centrosomes in early and spindle in later mitosis {ECO:0000250 UniProtKB:Q9QWT9}

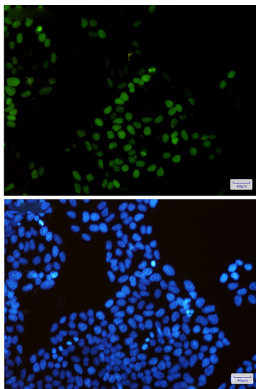
## Background

Minus end-directed microtubule-dependent motor required for bipolar spindle formation. May contribute to movement of early endocytic vesicles.

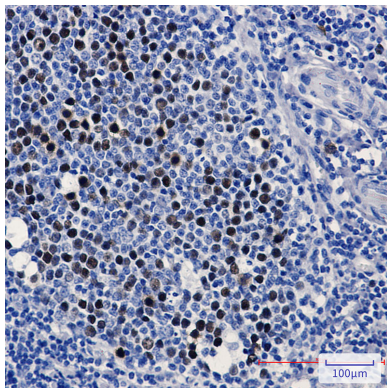
## Images



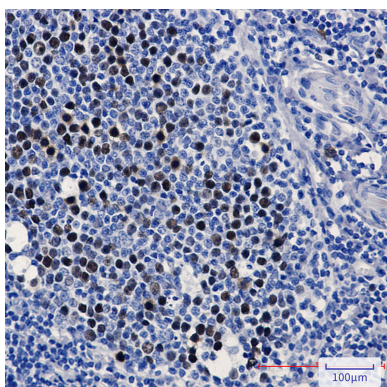
Western blot analysis of KIFC1 in K562, 3T3, HeLa lysates using KIFC1 antibody.

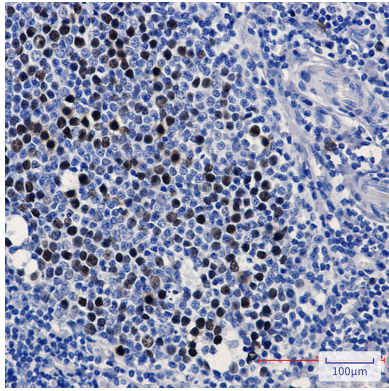


Immunocytochemistry analysis of KIFC1 (green) in HeLa using KIFC1 antibody, and DAPI (blue)



Immunohistochemistry analysis of paraffin-embedded Human tonsil using KIFC1 antibody. High-pressure and temperature Sodium Citrate pH 6.0 was used for antigen retrieval.





Please note: All products are 'FOR RESEARCH USE ONLY. NOT FOR USE IN DIAGNOSTIC OR THERAPEUTIC PROCEDURES'.