

KLLN Rabbit mAb

Catalog # AP75655

Product Information

Application	WB
Primary Accession	B2CW77
Reactivity	Rat, Human, Mouse
Host	Rabbit
Clonality	Monoclonal Antibody
Isotype	IgG
Conjugate	Unconjugated
Purification	Affinity Purified
Calculated MW	19958

Additional Information

Gene ID	100144748
Other Names	KLLN
Dilution	WB~~1:500-1:1000
Format	Liquid in 50mM Tris-Glycine(pH 7.4), 0.15M NaCl, 40%Glycerol, 0.01% sodium azide and 0.05% BSA.
Storage	Store at 4°C short term. Aliquot and store at -20°C long term. Avoid freeze/thaw cycles.

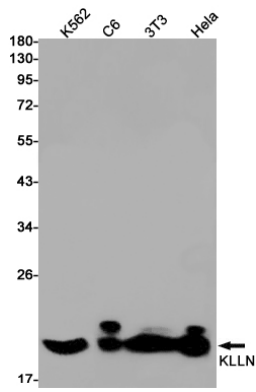
Protein Information

Name	KLLN
Function	DNA-binding protein involved in S phase checkpoint control- coupled apoptosis by mediating p53/TP53-induced apoptosis. Has the ability to inhibit DNA synthesis and S phase arrest coupled to apoptosis. Has affinity to both double- and single-stranded DNA.
Cellular Location	Nucleus.

Background

DNA-binding protein involved in S phase checkpoint control-coupled apoptosis by mediating p53/TP53-induced apoptosis. Has the ability to inhibit DNA synthesis and S phase arrest coupled to apoptosis. Has affinity to both double- and single-stranded DNA.

Images



Western blot analysis of KLLN in K562, C6, 3T3, HeLa lysates using Killin antibody.

Please note: All products are 'FOR RESEARCH USE ONLY. NOT FOR USE IN DIAGNOSTIC OR THERAPEUTIC PROCEDURES'.