

# L1CAM Rabbit mAb

Catalog # AP75658

## Product Information

---

<b>Application</b>	WB, IHC-P
<b>Primary Accession</b>	<a href="#">P32004</a>
<b>Reactivity</b>	Human
<b>Host</b>	Rabbit
<b>Clonality</b>	Monoclonal Antibody
<b>Calculated MW</b>	140003

## Additional Information

---

<b>Gene ID</b>	3897
<b>Other Names</b>	L1CAM
<b>Dilution</b>	WB~~1/500-1/1000 IHC-P~~N/A
<b>Format</b>	50mM Tris-Glycine(pH 7.4), 0.15M NaCl, 40%Glycerol, 0.01% sodium azide and 0.05% BSA.
<b>Storage</b>	Store at 4°C short term. Aliquot and store at -20°C long term. Avoid freeze/thaw cycles.

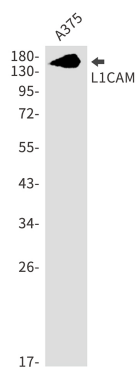
## Protein Information

---

<b>Name</b>	L1CAM
<b>Synonyms</b>	CAML1, MIC5
<b>Function</b>	Neural cell adhesion molecule involved in the dynamics of cell adhesion and in the generation of transmembrane signals at tyrosine kinase receptors. During brain development, critical in multiple processes, including neuronal migration, axonal growth and fasciculation, and synaptogenesis. In the mature brain, plays a role in the dynamics of neuronal structure and function, including synaptic plasticity.
<b>Cellular Location</b>	Cell membrane; Single-pass type I membrane protein {ECO:0000250 UniProtKB:Q05695}. Cell projection, growth cone {ECO:0000250 UniProtKB:Q05695}. Cell projection, axon. Cell projection, dendrite Note=Colocalized with SHTN1 in close apposition with actin filaments in filopodia and lamellipodia of axonal growth cones of hippocampal neurons (By similarity). In neurons, detected predominantly in axons and cell body, weak localization to dendrites (PubMed:20621658) {ECO:0000250 UniProtKB:Q05695, ECO:0000269 PubMed:20621658}

## Images

---



Please note: All products are 'FOR RESEARCH USE ONLY. NOT FOR USE IN DIAGNOSTIC OR THERAPEUTIC PROCEDURES'.