

# Laminin gamma 1 Rabbit mAb

Catalog # AP75664

## Product Information

---

<b>Application</b>	WB, IHC-P, FC, IP
<b>Primary Accession</b>	<a href="#">P11047</a>
<b>Reactivity</b>	Rat, Human, Mouse
<b>Host</b>	Rabbit
<b>Clonality</b>	Monoclonal Antibody
<b>Isotype</b>	IgG
<b>Conjugate</b>	Unconjugated
<b>Purification</b>	Affinity Purified
<b>Calculated MW</b>	177603

## Additional Information

---

<b>Gene ID</b>	3915
<b>Other Names</b>	LAMC1
<b>Dilution</b>	WB~~1:500-1:1000 IHC-P~~N/A FC~~1:20-1:50 IP~~1:20-1:50
<b>Format</b>	Liquid in 50mM Tris-Glycine(pH 7.4), 0.15M NaCl, 40%Glycerol, 0.01% sodium azide and 0.05% BSA.
<b>Storage</b>	Store at 4°C short term. Aliquot and store at -20°C long term. Avoid freeze/thaw cycles.

## Protein Information

---

<b>Name</b>	LAMC1 {ECO:0000303   PubMed:28397838, ECO:0000312   HGNC:HGNC:6492}
<b>Function</b>	Binding to cells via a high affinity receptor, laminin is thought to mediate the attachment, migration and organization of cells into tissues during embryonic development by interacting with other extracellular matrix components. As a subunit of laminin-1 (also known as laminin-111 or EHS laminin), it is involved in the stimulation of agrin-induced receptor clustering through a MuSK-independent pathway.
<b>Cellular Location</b>	Secreted, extracellular space, extracellular matrix, basement membrane
<b>Tissue Location</b>	Found in the basement membranes (major component).

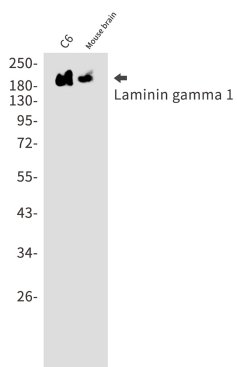
## Background

---

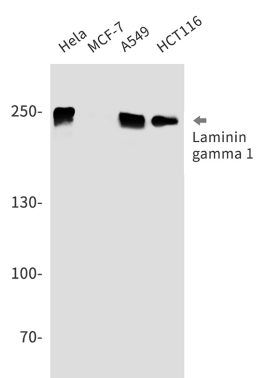
Binding to cells via a high affinity receptor, laminin is thought to mediate the attachment, migration and

organization of cells into tissues during embryonic development by interacting with other extracellular matrix components.

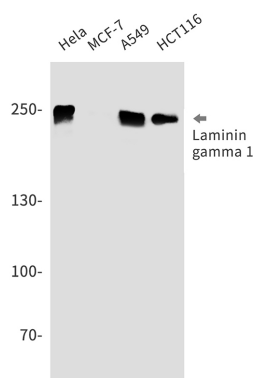
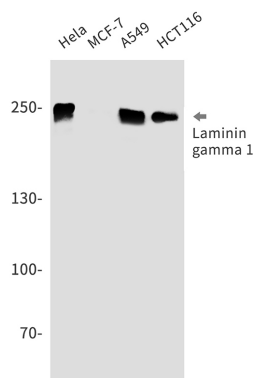
## Images



Western blot analysis of Laminin gamma 1 in C6, mouse brain lysates using Laminin gamma 1 antibody.



Western blot analysis of Laminin gamma 1 in HeLa, MCF-7, A549, HCT116 lysates using Laminin gamma 1 antibody.



Please note: All products are 'FOR RESEARCH USE ONLY. NOT FOR USE IN DIAGNOSTIC OR THERAPEUTIC PROCEDURES'.