

# LAT Rabbit mAb

Catalog # AP75668

## Product Information

---

<b>Application</b>	WB, IHC-P, IP
<b>Primary Accession</b>	<a href="#">O43561</a>
<b>Reactivity</b>	Human
<b>Host</b>	Rabbit
<b>Clonality</b>	Monoclonal Antibody
<b>Calculated MW</b>	27930

## Additional Information

---

<b>Gene ID</b>	27040
<b>Other Names</b>	LAT
<b>Dilution</b>	WB~~1/500-1/1000 IHC-P~~N/A IP~~N/A
<b>Format</b>	Liquid

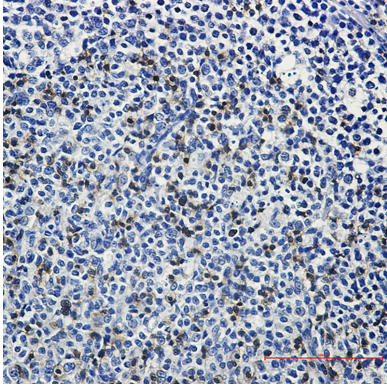
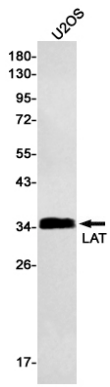
## Protein Information

---

<b>Name</b>	LAT
<b>Function</b>	Required for TCR (T-cell antigen receptor)- and pre-TCR- mediated signaling, both in mature T-cells and during their development (PubMed: <a href="#">23514740</a> , PubMed: <a href="#">25907557</a> ). Involved in FCGR3 (low affinity immunoglobulin gamma Fc region receptor III)-mediated signaling in natural killer cells and FCER1 (high affinity immunoglobulin epsilon receptor)-mediated signaling in mast cells. Couples activation of these receptors and their associated kinases with distal intracellular events such as mobilization of intracellular calcium stores, PKC activation, MAPK activation or cytoskeletal reorganization through the recruitment of PLCG1, GRB2, GRAP2, and other signaling molecules.
<b>Cellular Location</b>	Cell membrane; Single-pass type III membrane protein. Note=Present in lipid rafts
<b>Tissue Location</b>	Expressed in thymus, T-cells, NK cells, mast cells and, at lower levels, in spleen. Present in T-cells but not B-cells (at protein level).

## Images

---



Please note: All products are 'FOR RESEARCH USE ONLY. NOT FOR USE IN DIAGNOSTIC OR THERAPEUTIC PROCEDURES'.