

# Lumican Rabbit mAb

Catalog # AP75683

## Product Information

---

<b>Application</b>	WB, IHC-P, FC
<b>Primary Accession</b>	<a href="#">P51884</a>
<b>Reactivity</b>	Rat, Human, Mouse
<b>Host</b>	Rabbit
<b>Clonality</b>	Monoclonal Antibody
<b>Isotype</b>	IgG
<b>Conjugate</b>	Unconjugated
<b>Purification</b>	Affinity Purified
<b>Calculated MW</b>	38429

## Additional Information

---

<b>Gene ID</b>	4060
<b>Other Names</b>	LUM
<b>Dilution</b>	WB~~1:1000-1:5000 IHC-P~~N/A FC~~1:100-1:200
<b>Format</b>	Liquid in 50mM Tris-Glycine(pH 7.4), 0.15M NaCl, 40%Glycerol, 0.01% sodium azide and 0.05% BSA.
<b>Storage</b>	Store at 4°C short term. Aliquot and store at -20°C long term. Avoid freeze/thaw cycles.

## Protein Information

---

<b>Name</b>	LUM
<b>Synonyms</b>	LDC, SLRR2D
<b>Cellular Location</b>	Secreted, extracellular space, extracellular matrix
<b>Tissue Location</b>	Cornea and other tissues.

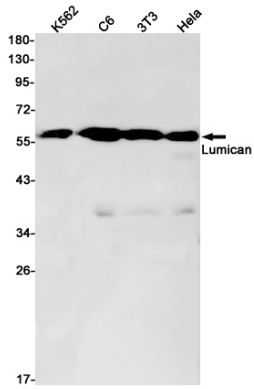
## Background

---

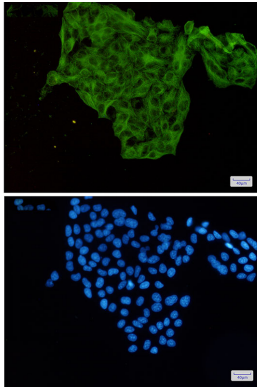
Belongs to the small leucine-rich proteoglycan (SLRP) family. SLRP class II subfamily. Contains 11 LRR (leucine-rich) repeats. Contains 1 LRRNT domain.

## Images

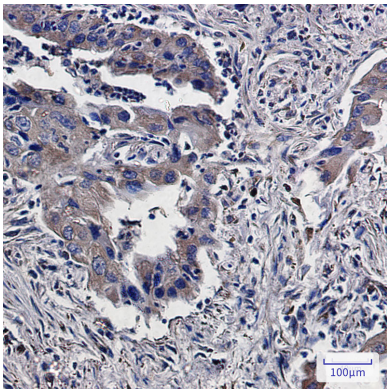
---



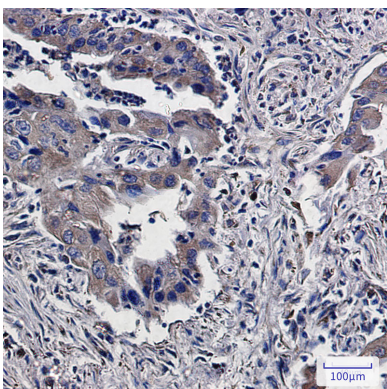
Western blot analysis of Lumican in K562, C6, 3T3, HeLa lysates using Lumican antibody.



Immunocytochemistry analysis of Lumican(green) in HeLa using Lumican antibody, and DAPI(blue)



Immunohistochemistry analysis of paraffin-embedded Human lung cancer using Lumican antibody. High-pressure and temperature Sodium Citrate pH 6.0 was used for antigen retrieval.



Please note: All products are 'FOR RESEARCH USE ONLY. NOT FOR USE IN DIAGNOSTIC OR THERAPEUTIC PROCEDURES'.