

MBD2 Rabbit mAb

Catalog # AP75695

Product Information

Application	WB, IHC-P, IHC-F, IP, ICC
Primary Accession	Q9UBB5
Reactivity	Human, Mouse, Rat
Host	Rabbit
Clonality	Monoclonal Antibody
Calculated MW	43255

Additional Information

Gene ID	8932
Other Names	MBD2
Dilution	WB~~1/500-1/1000 IHC-P~~N/A IHC-F~~N/A IP~~N/A ICC~~N/A
Format	50mM Tris-Glycine(pH 7.4), 0.15M NaCl, 40%Glycerol, 0.01% sodium azide and 0.05% BSA.
Storage	Store at 4°C short term. Aliquot and store at -20°C long term. Avoid freeze/thaw cycles.

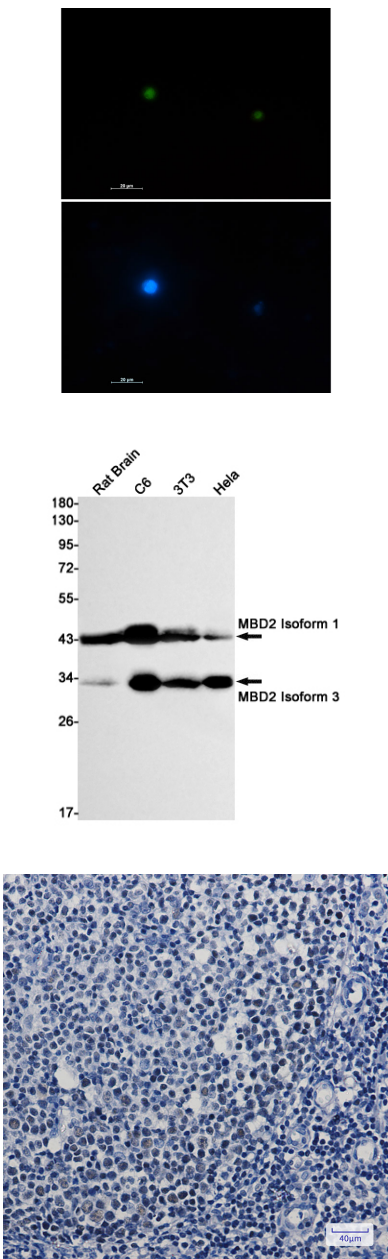
Protein Information

Name	MBD2 (HGNC:6917)
Function	Binds CpG islands in promoters where the DNA is methylated at position 5 of cytosine within CpG dinucleotides (PubMed: 9774669). Binds hemimethylated DNA as well (PubMed: 10947852 , PubMed: 24307175). Recruits histone deacetylases and DNA methyltransferases to chromatin (PubMed: 10471499 , PubMed: 10947852). Acts as a component of the histone deacetylase NuRD complex which participates in the remodeling of chromatin (PubMed: 16428440 , PubMed: 28977666). Acts as a transcriptional repressor and plays a role in gene silencing (PubMed: 10471499 , PubMed: 10947852 , PubMed: 16415179). Functions as a scaffold protein, targeting GATAD2A and GATAD2B to chromatin to promote repression (PubMed: 16415179). May enhance the activation of some unmethylated cAMP-responsive promoters (PubMed: 12665568).
Cellular Location	Nucleus. Chromosome Note=Nuclear, in discrete foci (PubMed:12183469). Detected at replication foci in late S phase. Localizes to methylated chromatin (PubMed:16428440). Localizes to sites of DNA damage in a manner partially dependent on ZMYND8 (PubMed:27732854)

Tissue Location

Highly expressed in brain, heart, kidney, stomach, testis and placenta.

Images



Please note: All products are 'FOR RESEARCH USE ONLY. NOT FOR USE IN DIAGNOSTIC OR THERAPEUTIC PROCEDURES'.