

# Metabotropic Glutamate Receptor 2 Rabbit mAb

Catalog # AP75713

## Product Information

---

|                   |                        |
|-------------------|------------------------|
| Application       | WB, IHC-P              |
| Primary Accession | <a href="#">Q14416</a> |
| Reactivity        | Human, Mouse           |
| Host              | Rabbit                 |
| Clonality         | Monoclonal Antibody    |
| Calculated MW     | 95568                  |

## Additional Information

---

|             |                             |
|-------------|-----------------------------|
| Gene ID     | 2912                        |
| Other Names | GRM2                        |
| Dilution    | WB~~1/500-1/1000 IHC-P~~N/A |
| Format      | Liquid                      |

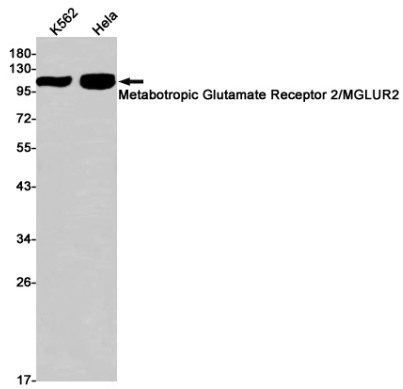
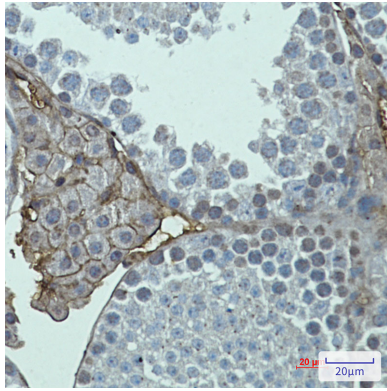
## Protein Information

---

|                   |   |
|-------------------|---|
| Name              | GRM2 ( <a href="#">HGNC:4594</a> )  |
| Synonyms          | GPRC1B, MGLUR2  |
| Function          | <p>Dimeric G protein-coupled receptor which is activated by the excitatory neurotransmitter L-glutamate (PubMed:<a href="#">37286794</a>). Plays critical roles in modulating synaptic transmission and neuronal excitability. Upon activation by glutamate, inhibits presynaptic calcium channels, reducing further glutamate release and dampening excitatory signaling (By similarity). Mechanistically, ligand binding causes a conformation change that triggers signaling via guanine nucleotide-binding proteins (G proteins) and modulates the activity of down-stream effectors, such as adenylate cyclase. May mediate suppression of neurotransmission or may be involved in synaptogenesis or synaptic stabilization.</p> |
| Cellular Location | Cell membrane; Multi-pass membrane protein. Synapse. Cell projection, dendrite  |
| Tissue Location   | Detected in brain cortex (at protein level). Widely expressed in different regions of the adult brain as well as in fetal brain.  |

## Images

---



Please note: All products are 'FOR RESEARCH USE ONLY. NOT FOR USE IN DIAGNOSTIC OR THERAPEUTIC PROCEDURES'.