

# MMP2 Rabbit mAb

Catalog # AP75729

## Product Information

Application	WB, ICC
Primary Accession	<a href="#">P08253</a>
Reactivity	Mouse
Host	Rabbit
Clonality	Monoclonal Antibody
Calculated MW	73882

## Additional Information

Gene ID	4313
Other Names	MMP2
Dilution	WB~~1/500-1/1000 ICC~~N/A
Format	50mM Tris-Glycine(pH 7.4), 0.15M NaCl, 40%Glycerol, 0.01% sodium azide and 0.05% BSA.

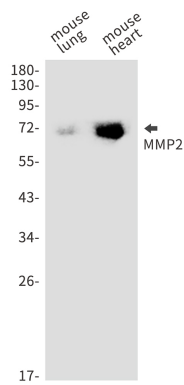
## Protein Information

Name	MMP2
Synonyms	CLG4A
Function	Ubiquitinous metalloproteinase that is involved in diverse functions such as remodeling of the vasculature, angiogenesis, tissue repair, tumor invasion, inflammation, and atherosclerotic plaque rupture. As well as degrading extracellular matrix proteins, can also act on several nonmatrix proteins such as big endothelial 1 and beta- type CGRP promoting vasoconstriction. Also cleaves KISS at a Gly- -Leu bond. Appears to have a role in myocardial cell death pathways. Contributes to myocardial oxidative stress by regulating the activity of GSK3beta. Cleaves GSK3beta in vitro. Involved in the formation of the fibrovascular tissues in association with MMP14. [Isoform 2]: Mediates the proteolysis of CHUK/IKKA and initiates a primary innate immune response by inducing mitochondrial- nuclear stress signaling with activation of the pro-inflammatory NF- kappaB, NFAT and IRF transcriptional pathways.
Cellular Location	[Isoform 1]: Secreted, extracellular space, extracellular matrix. Membrane. Nucleus Note=Colocalizes with integrin alphaV/beta3 at the membrane surface in angiogenic blood vessels and melanomas. Found in mitochondria, along microfibrils, and in nuclei of cardiomyocytes
Tissue Location	Produced by normal skin fibroblasts. PEX is expressed in a number of tumors

including gliomas, breast and prostate

## Images

---



Please note: All products are 'FOR RESEARCH USE ONLY. NOT FOR USE IN DIAGNOSTIC OR THERAPEUTIC PROCEDURES'.