

# MYO19 Rabbit mAb

Catalog # AP75766

## Product Information

---

|                   |                        |
|-------------------|------------------------|
| Application       | WB                     |
| Primary Accession | <a href="#">Q96H55</a> |
| Reactivity        | Human, Mouse           |
| Host              | Rabbit                 |
| Clonality         | Monoclonal Antibody    |
| Calculated MW     | 109135                 |

## Additional Information

---

|             |                  |
|-------------|------------------|
| Gene ID     | 80179            |
| Other Names | MYO19            |
| Dilution    | WB~~1/500-1/1000 |
| Format      | Liquid           |

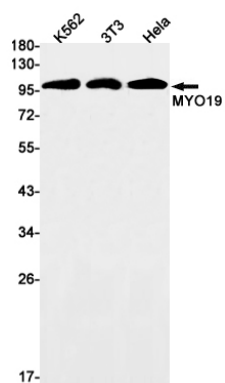
## Protein Information

---

|                   |   |
|-------------------|---|
| Name              | MYO19 {ECO:0000303   PubMed:19932026, ECO:0000312   HGNC:HGNC:26234}  |
| Function          | Actin-based motor molecule with ATPase activity that localizes to the mitochondrion outer membrane (PubMed: <a href="#">19932026</a> , PubMed: <a href="#">23568824</a> , PubMed: <a href="#">25447992</a> ). Motor protein that moves towards the plus-end of actin filaments (By similarity). Required for mitochondrial inheritance during mitosis (PubMed: <a href="#">25447992</a> ). May be involved in mitochondrial transport or positioning (PubMed: <a href="#">23568824</a> ). |
| Cellular Location | Mitochondrion outer membrane; Peripheral membrane protein. Cytoplasm, cytoskeleton  |
| Tissue Location   | Widely expressed in multiple tissues and cell lines.  |

## Images

---



Please note: All products are 'FOR RESEARCH USE ONLY. NOT FOR USE IN DIAGNOSTIC OR THERAPEUTIC PROCEDURES'.