

MYL2 Rabbit mAb

Catalog # AP75768

Product Information

Application	WB, IHC-P, IP
Primary Accession	P10916
Reactivity	Mouse, Rat
Host	Rabbit
Clonality	Monoclonal Antibody
Calculated MW	18789

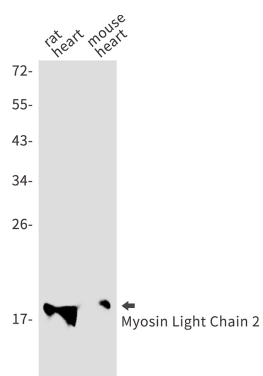
Additional Information

Gene ID	4633
Other Names	MYL2
Dilution	WB~~1/500-1/1000 IHC-P~~N/A IP~~N/A
Format	Liquid

Protein Information

Name	MYL2 (HGNC:7583)
Function	Contractile protein that plays a role in heart development and function (PubMed: 23365102 , PubMed: 32453731). Following phosphorylation, plays a role in cross-bridge cycling kinetics and cardiac muscle contraction by increasing myosin lever arm stiffness and promoting myosin head diffusion; as a consequence of the increase in maximum contraction force and calcium sensitivity of contraction force. These events altogether slow down myosin kinetics and prolong duty cycle resulting in accumulated myosins being cooperatively recruited to actin binding sites to sustain thin filament activation as a means to fine-tune myofilament calcium sensitivity to force (By similarity). During cardiogenesis plays an early role in cardiac contractility by promoting cardiac myofibril assembly (By similarity).
Cellular Location	Cytoplasm, myofibril, sarcomere, A band {ECO:0000250 UniProtKB:P08733}
Tissue Location	Highly expressed in type I muscle fibers.

Images



Please note: All products are 'FOR RESEARCH USE ONLY. NOT FOR USE IN DIAGNOSTIC OR THERAPEUTIC PROCEDURES'.