

SLC12A1 Rabbit mAb

Catalog # AP75812

Product Information

Application	WB
Primary Accession	Q13621
Reactivity	Human
Host	Rabbit
Clonality	Monoclonal Antibody
Calculated MW	121450

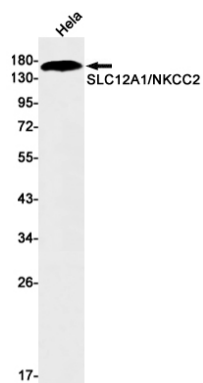
Additional Information

Gene ID	6557
Other Names	SLC12A1
Dilution	WB~~1/500-1/1000
Format	50mM Tris-Glycine(pH 7.4), 0.15M NaCl, 40%Glycerol, 0.01% sodium azide and 0.05% BSA.
Storage	Store at 4°C short term. Aliquot and store at -20°C long term. Avoid freeze/thaw cycles.

Protein Information

Name	SLC12A1
Synonyms	NKCC2 {ECO:0000303 PubMed:8640224}
Function	Renal sodium, potassium and chloride ion cotransporter that mediates the transepithelial NaCl reabsorption in the thick ascending limb and plays an essential role in the urinary concentration and volume regulation (PubMed: 21321328). Electrically silent transporter system (By similarity).
Cellular Location	Apical cell membrane; Multi-pass membrane protein
Tissue Location	Kidney; localizes to the thick ascending limbs (at protein level).

Images



Please note: All products are 'FOR RESEARCH USE ONLY. NOT FOR USE IN DIAGNOSTIC OR THERAPEUTIC PROCEDURES'.