

RASGRF1 Antibody (S929)

Affinity Purified Rabbit Polyclonal Antibody (Pab)

Catalog # AP7582b

Product Information

Application	WB, IHC-P, E
Primary Accession	Q13972
Reactivity	Human
Host	Rabbit
Clonality	Polyclonal
Isotype	Rabbit IgG
Clone Names	RB14017
Calculated MW	145234
Antigen Region	907-936

Additional Information

Gene ID	5923
Other Names	Ras-specific guanine nucleotide-releasing factor 1, Ras-GRF1, Guanine nucleotide-releasing protein, GNRP, Ras-specific nucleotide exchange factor CDC25, RASGRF1, CDC25, GNRP, GRF1
Target/Specificity	This RASGRF1 antibody is generated from rabbits immunized with a KLH conjugated synthetic peptide between 907-936 amino acids from human RASGRF1.
Dilution	WB~~1:1000 IHC-P~~1:100~500 E~~Use at an assay dependent concentration.
Format	Purified polyclonal antibody supplied in PBS with 0.09% (W/V) sodium azide. This antibody is purified through a protein A column, followed by peptide affinity purification.
Storage	Maintain refrigerated at 2-8°C for up to 2 weeks. For long term storage store at -20°C in small aliquots to prevent freeze-thaw cycles.
Precautions	RASGRF1 Antibody (S929) is for research use only and not for use in diagnostic or therapeutic procedures.

Protein Information

Name	RASGRF1
Synonyms	CDC25, GNRP, GRF1
Function	Promotes the exchange of Ras-bound GDP by GTP.

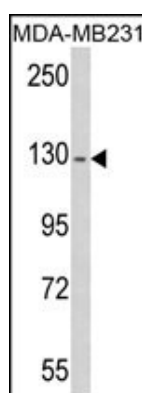
Background

RASGRF1 is a guanine nucleotide exchange factor (GEF) similar to the *Saccharomyces cerevisiae* CDC25 gene product. Functional analysis has demonstrated that this protein stimulates the dissociation of GDP from RAS protein. Studies of the similar gene in mouse suggested that the Ras-GEF activity of this protein in brain can be activated by Ca²⁺ influx, muscarinic receptors, and G protein beta-gamma subunit. Mouse studies also indicated that the Ras-GEF signaling pathway mediated by this protein may be important for long-term memory.

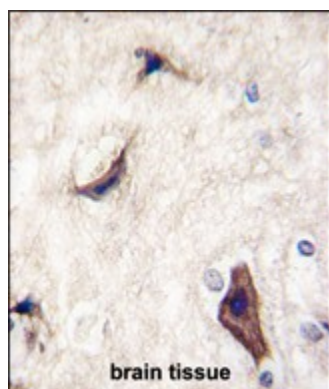
References

Iguchi,T., Int. J. Oncol. 31 (2), 285-291 (2007)
Holmes,R., Mol. Cell. Biol. 26 (24), 9564-9570 (2006)

Images



Western blot analysis of RASGRF1-pS929 (Cat. #AP7582b) in MDA-MB231 cell line lysates (35ug/lane). RASGRF1 (arrow) was detected using the purified Pab.



Formalin-fixed and paraffin-embedded human brain tissue reacted with RASGRF1 Antibody (S929) (Cat.#AP7582b), which was peroxidase-conjugated to the secondary antibody, followed by DAB staining. This data demonstrates the use of this antibody for immunohistochemistry; clinical relevance has not been evaluated.

Please note: All products are 'FOR RESEARCH USE ONLY. NOT FOR USE IN DIAGNOSTIC OR THERAPEUTIC PROCEDURES'.