

# NUP107 Rabbit mAb

Catalog # AP75834

## Product Information

---

Application	WB
Primary Accession	<a href="#">P57740</a>
Reactivity	Human, Rat
Host	Rabbit
Clonality	Monoclonal Antibody
Calculated MW	106374

## Additional Information

---

Gene ID	57122
Other Names	NUP107
Dilution	WB~~1/500-1/1000
Format	50mM Tris-Glycine(pH 7.4), 0.15M NaCl, 40%Glycerol, 0.01% sodium azide and 0.05% BSA.
Storage	Store at 4°C short term. Aliquot and store at -20°C long term. Avoid freeze/thaw cycles.

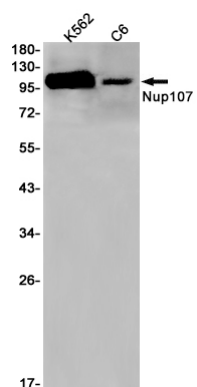
## Protein Information

---

Name	NUP107
Function	Plays a role in the nuclear pore complex (NPC) assembly and/or maintenance (PubMed: <a href="#">12552102</a> , PubMed: <a href="#">15229283</a> , PubMed: <a href="#">30179222</a> ). Required for the assembly of peripheral proteins into the NPC (PubMed: <a href="#">12552102</a> , PubMed: <a href="#">15229283</a> ). May anchor NUP62 to the NPC (PubMed: <a href="#">15229283</a> ). Involved in nephrogenesis (PubMed: <a href="#">30179222</a> ).
Cellular Location	Nucleus membrane. Nucleus, nuclear pore complex. Chromosome, centromere, kinetochore. Note=Located on both the cytoplasmic and nuclear sides of the NPC core structure (PubMed:11564755). During mitosis, localizes to the kinetochores (PubMed:11564755). Dissociates from the disassembled NPC structure late during prophase of mitosis (PubMed:11564755)
Tissue Location	Ubiquitously expressed in fetal and adult tissues.

## Images

---



Please note: All products are 'FOR RESEARCH USE ONLY. NOT FOR USE IN DIAGNOSTIC OR THERAPEUTIC PROCEDURES'.