

# NXF1 Rabbit mAb

Catalog # AP75837

## Product Information

---

Application	WB, IHC-P, IHC-F, IP, ICC
Primary Accession	<a href="#">Q9UBU9</a>
Reactivity	Human
Host	Rabbit
Clonality	Monoclonal Antibody
Calculated MW	70182

## Additional Information

---

Gene ID	10482
Other Names	NXF1
Dilution	WB~~1/500-1/1000 IHC-P~~N/A IHC-F~~N/A IP~~N/A ICC~~N/A
Format	Liquid

## Protein Information

---

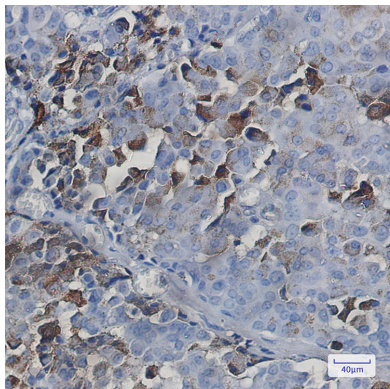
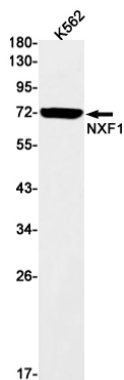
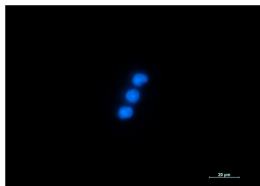
Name	NXF1
Synonyms	TAP
Function	<p>Involved in the nuclear export of mRNA species bearing retroviral constitutive transport elements (CTE) and in the export of mRNA from the nucleus to the cytoplasm (TAP/NFX1 pathway) (PubMed:<a href="#">10924507</a>). The NXF1-NXT1 heterodimer is involved in the export of HSP70 mRNA in conjunction with ALYREF/THOC4 and THOC5 components of the TREX complex (PubMed:<a href="#">18364396</a>, PubMed:<a href="#">19165146</a>, PubMed:<a href="#">9660949</a>).</p> <p>ALYREF/THOC4-bound mRNA is thought to be transferred to the NXF1-NXT1 heterodimer for export (PubMed:<a href="#">18364396</a>, PubMed:<a href="#">19165146</a>, PubMed:<a href="#">9660949</a>). Also involved in nuclear export of m6A-containing mRNAs: interaction between SRSF3 and YTHDC1 facilitates m6A-containing mRNA-binding to both SRSF3 and NXF1, promoting mRNA nuclear export (PubMed:<a href="#">28984244</a>).</p>
Cellular Location	<p>Nucleus. Nucleus, nucleoplasm Nucleus speckle. Nucleus, nuclear pore complex. Nucleus envelope. Cytoplasm. Cytoplasm, Stress granule.</p> <p>Note=Localized predominantly in the nucleoplasm and at both the nucleoplasmic and cytoplasmic faces of the nuclear pore complex. Shuttles between the nucleus and the cytoplasm. Travels to the cytoplasm as part of the exon junction complex (EJC) bound to mRNA. The association with the TREX complex seems to occur in regions surrounding nuclear speckles known</p>

as perispeckles (PubMed:23826332). Nucleus; nuclear rim  
(PubMed:25662211)

**Tissue Location** Expressed ubiquitously.

**Images**

---



Please note: All products are 'FOR RESEARCH USE ONLY. NOT FOR USE IN DIAGNOSTIC OR THERAPEUTIC PROCEDURES'.