

P Glycoprotein Rabbit mAb

Catalog # AP75845

Product Information

Application	WB
Primary Accession	P08183
Reactivity	Human
Host	Rabbit
Clonality	Monoclonal Antibody
Calculated MW	141479

Additional Information

Gene ID	5243
Other Names	ABCB1
Dilution	WB~~1/500-1/1000
Format	50mM Tris-Glycine(pH 7.4), 0.15M NaCl, 40%Glycerol, 0.01% sodium azide and 0.05% BSA.
Storage	Store at 4°C short term. Aliquot and store at -20°C long term. Avoid freeze/thaw cycles.

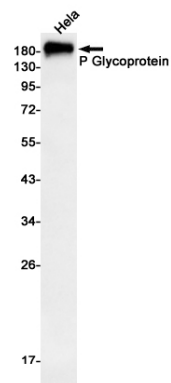
Protein Information

Name	ABCB1 (HGNC:40)
Synonyms	MDR1, PGY1
Function	Translocates drugs and phospholipids across the membrane (PubMed: 2897240 , PubMed: 35970996 , PubMed: 8898203 , PubMed: 9038218 , PubMed: 35507548). Catalyzes the flop of phospholipids from the cytoplasmic to the exoplasmic leaflet of the apical membrane. Participates mainly to the flop of phosphatidylcholine, phosphatidylethanolamine, beta-D-glucosylceramides and sphingomyelins (PubMed: 8898203). Energy-dependent efflux pump responsible for decreased drug accumulation in multidrug-resistant cells (PubMed: 2897240 , PubMed: 35970996 , PubMed: 9038218).
Cellular Location	Cell membrane; Multi-pass membrane protein {ECO:0000255 PROSITE-ProRule:PRU00441} Apical cell membrane. Cytoplasm Note=ABCB1 localization is influenced by C1orf115 expression levels (plasma membrane versus cytoplasm). Localized to the apical membrane of enterocytes (PubMed:28408210).

Tissue Location

Expressed in small intestine (PubMed:28408210). Expressed in liver, kidney and brain.

Images



Please note: All products are 'FOR RESEARCH USE ONLY. NOT FOR USE IN DIAGNOSTIC OR THERAPEUTIC PROCEDURES'.