

# p40 Rabbit mAb

Catalog # AP75852

## Product Information

---

<b>Application</b>	WB
<b>Primary Accession</b>	<a href="#">Q7Z6M1</a>
<b>Reactivity</b>	Human
<b>Host</b>	Rabbit
<b>Clonality</b>	Monoclonal Antibody
<b>Isotype</b>	IgG
<b>Conjugate</b>	Unconjugated
<b>Purification</b>	Affinity Purified
<b>Calculated MW</b>	41 KDa

## Additional Information

---

<b>Other Names</b>	RABEPK
<b>Dilution</b>	WB~~1:1000-1:5000
<b>Format</b>	Liquid in 50mM Tris-Glycine(pH 7.4), 0.15M NaCl, 40%Glycerol, 0.01% sodium azide and 0.05% BSA.
<b>Storage</b>	Store at 4°C short term. Aliquot and store at -20°C long term. Avoid freeze/thaw cycles.

## Protein Information

---

### Background

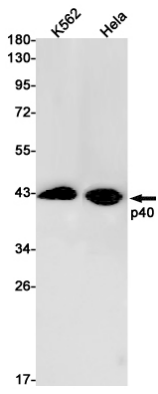
---

Predicted to be involved in receptor-mediated endocytosis and vesicle docking involved in exocytosis.  
Predicted to be located in cytoplasmic vesicle; cytosol; and trans-Golgi network membrane.

### Images

---

Western blot analysis of p40 in K562, HeLa lysates using p40 antibody.



Please note: All products are 'FOR RESEARCH USE ONLY. NOT FOR USE IN DIAGNOSTIC OR THERAPEUTIC PROCEDURES'.