

# PAI1 Rabbit mAb

Catalog # AP75864

## Product Information

Application	WB, IP, ICC
Primary Accession	<a href="#">P05121</a>
Reactivity	Human, Mouse, Rat
Host	Rabbit
Clonality	Monoclonal Antibody
Calculated MW	45060

## Additional Information

Gene ID	5054
Other Names	SERPINE1
Dilution	WB~~1/500-1/1000 IP~~N/A ICC~~N/A
Format	50mM Tris-Glycine(pH 7.4), 0.15M NaCl, 40%Glycerol, 0.01% sodium azide and 0.05% BSA.

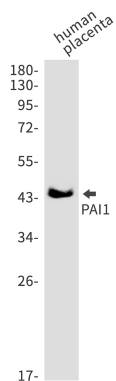
## Protein Information

Name	SERPINE1
Synonyms	PAI1, PLANH1
Function	Serine protease inhibitor. Inhibits TMPRSS7 (PubMed: <a href="#">15853774</a> ). Is a primary inhibitor of tissue-type plasminogen activator (PLAT) and urokinase-type plasminogen activator (PLAU). As PLAT inhibitor, it is required for fibrinolysis down-regulation and is responsible for the controlled degradation of blood clots (PubMed: <a href="#">17912461</a> , PubMed: <a href="#">8481516</a> , PubMed: <a href="#">9207454</a> , PubMed: <a href="#">21925150</a> ). As PLAU inhibitor, it is involved in the regulation of cell adhesion and spreading (PubMed: <a href="#">9175705</a> ). Acts as a regulator of cell migration, independently of its role as protease inhibitor (PubMed: <a href="#">15001579</a> , PubMed: <a href="#">9168821</a> ). It is required for stimulation of keratinocyte migration during cutaneous injury repair (PubMed: <a href="#">18386027</a> ). It is involved in cellular and replicative senescence (PubMed: <a href="#">16862142</a> ). Plays a role in alveolar type 2 cells senescence in the lung (By similarity). Is involved in the regulation of cementogenic differentiation of periodontal ligament stem cells, and regulates odontoblast differentiation and dentin formation during odontogenesis (PubMed: <a href="#">25808697</a> , PubMed: <a href="#">27046084</a> ).
Cellular Location	Secreted.
Tissue Location	Expressed in endothelial cells (PubMed:2430793, PubMed:3097076). Found in

plasma, platelets, and hepatoma and fibrosarcoma cells.

## Images

---



Please note: All products are 'FOR RESEARCH USE ONLY. NOT FOR USE IN DIAGNOSTIC OR THERAPEUTIC PROCEDURES'.