

APOE Antibody (C-term)

Purified Rabbit Polyclonal Antibody (Pab)

Catalog # AP7587b

Product Information

Application	WB, IHC-P, E
Primary Accession	P02649
Other Accession	P18287 , P10517
Reactivity	Human, Rat, Mouse
Predicted	Monkey, Rabbit
Host	Rabbit
Clonality	Polyclonal
Isotype	Rabbit IgG
Calculated MW	36154
Antigen Region	263-292

Additional Information

Gene ID	348
Other Names	Apolipoprotein E, Apo-E, APOE
Target/Specificity	This APOE antibody is generated from rabbits immunized with a KLH conjugated synthetic peptide between 263-292 amino acids from the C-terminal region of human APOE.
Dilution	WB~~1:1000 IHC-P~~1:100~500 E~~Use at an assay dependent concentration.
Format	Purified polyclonal antibody supplied in PBS with 0.09% (W/V) sodium azide. This antibody is prepared by Saturated Ammonium Sulfate (SAS) precipitation followed by dialysis against PBS.
Storage	Maintain refrigerated at 2-8°C for up to 2 weeks. For long term storage store at -20°C in small aliquots to prevent freeze-thaw cycles.
Precautions	APOE Antibody (C-term) is for research use only and not for use in diagnostic or therapeutic procedures.

Protein Information

Name	APOE (HGNC:613)
Function	APOE is an apolipoprotein, a protein associating with lipid particles, that mainly functions in lipoprotein-mediated lipid transport between organs via the plasma and interstitial fluids (PubMed: 14754908 , PubMed: 1911868 , PubMed: 6860692). APOE is a core component of plasma lipoproteins and is

involved in their production, conversion and clearance (PubMed:[14754908](#), PubMed:[1911868](#), PubMed:[1917954](#), PubMed:[23620513](#), PubMed:[2762297](#), PubMed:[6860692](#), PubMed:[9395455](#)). Apolipoproteins are amphipathic molecules that interact both with lipids of the lipoprotein particle core and the aqueous environment of the plasma (PubMed:[2762297](#), PubMed:[6860692](#), PubMed:[9395455](#)). As such, APOE associates with chylomicrons, chylomicron remnants, very low density lipoproteins (VLDL) and intermediate density lipoproteins (IDL) but shows a preferential binding to high-density lipoproteins (HDL) (PubMed:[1911868](#), PubMed:[6860692](#)). It also binds a wide range of cellular receptors including the LDL receptor/LDLR, the LDL receptor-related proteins LRP1, LRP2 and LRP8 and the very low-density lipoprotein receptor/VLDLR that mediate the cellular uptake of the APOE-containing lipoprotein particles (PubMed:[12950167](#), PubMed:[1530612](#), PubMed:[1917954](#), PubMed:[20030366](#), PubMed:[20303980](#), PubMed:[2063194](#), PubMed:[2762297](#), PubMed:[7635945](#), PubMed:[7768901](#), PubMed:[8756331](#), PubMed:[8939961](#)). Finally, APOE also has a heparin-binding activity and binds heparan- sulfate proteoglycans on the surface of cells, a property that supports the capture and the receptor-mediated uptake of APOE-containing lipoproteins by cells (PubMed:[23676495](#), PubMed:[7635945](#), PubMed:[9395455](#), PubMed:[9488694](#)). A main function of APOE is to mediate lipoprotein clearance through the uptake of chylomicrons, VLDLs, and HDLs by hepatocytes (PubMed:[1911868](#), PubMed:[1917954](#), PubMed:[23676495](#), PubMed:[29516132](#), PubMed:[9395455](#)). APOE is also involved in the biosynthesis by the liver of VLDLs as well as their uptake by peripheral tissues ensuring the delivery of triglycerides and energy storage in muscle, heart and adipose tissues (PubMed:[2762297](#), PubMed:[29516132](#)). By participating in the lipoprotein-mediated distribution of lipids among tissues, APOE plays a critical role in plasma and tissues lipid homeostasis (PubMed:[1917954](#), PubMed:[2762297](#), PubMed:[29516132](#)). APOE is also involved in two steps of reverse cholesterol transport, the HDLs-mediated transport of cholesterol from peripheral tissues to the liver, and thereby plays an important role in cholesterol homeostasis (PubMed:[14754908](#), PubMed:[23620513](#), PubMed:[9395455](#)). First, it is functionally associated with ABCA1 in the biogenesis of HDLs in tissues (PubMed:[14754908](#), PubMed:[23620513](#)). Second, it is enriched in circulating HDLs and mediates their uptake by hepatocytes (PubMed:[9395455](#)). APOE also plays an important role in lipid transport in the central nervous system, regulating neuron survival and sprouting (PubMed:[25173806](#), PubMed:[8939961](#)). APOE is also involved in innate and adaptive immune responses, controlling for instance the survival of myeloid-derived suppressor cells (By similarity). Binds to the immune cell receptor LILRB4 (PubMed:[30333625](#)). APOE may also play a role in transcription regulation through a receptor-dependent and cholesterol-independent mechanism, that activates MAP3K12 and a non-canonical MAPK signal transduction pathway that results in enhanced AP-1-mediated transcription of APP (PubMed:[28111074](#)).

Cellular Location

Secreted. Secreted, extracellular space. Secreted, extracellular space, extracellular matrix. Extracellular vesicle. Endosome, multivesicular body. Note=In the plasma, APOE is associated with chylomicrons, chylomicrons remnants, VLDL, LDL and HDL lipoproteins (PubMed:[1911868](#), PubMed:[8340399](#)). Lipid poor oligomeric APOE is associated with the extracellular matrix in a calcium- and heparan-sulfate proteoglycans-dependent manner (PubMed:[9488694](#)) Lipidation induces the release from the extracellular matrix (PubMed:[9488694](#)). Colocalizes with CD63 and PMEL at exosomes and in intraluminal vesicles within multivesicular endosomes

Tissue Location

Produced by several tissues and cell types and mainly found associated with lipid particles in the plasma, the interstitial fluid and lymph (PubMed:[25173806](#)). Mainly synthesized by liver hepatocytes

(PubMed:25173806). Significant quantities are also produced in brain, mainly by astrocytes and glial cells in the cerebral cortex, but also by neurons in frontal cortex and hippocampus (PubMed:10027417, PubMed:3115992). It is also expressed by cells of the peripheral nervous system (PubMed:10027417, PubMed:25173806). Also expressed by adrenal gland, testis, ovary, skin, kidney, spleen and adipose tissue and macrophages in various tissues (PubMed:25173806)

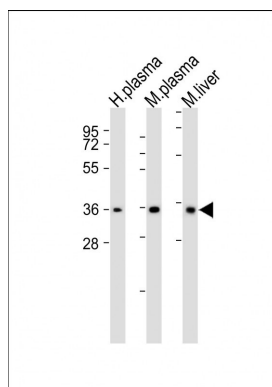
Background

Chylomicron remnants and very low density lipoprotein (VLDL) remnants are rapidly removed from the circulation by receptor-mediated endocytosis in the liver. Apolipoprotein E, a main apoprotein of the chylomicron, binds to a specific receptor on liver cells and peripheral cells. ApoE is essential for the normal catabolism of triglyceride-rich lipoprotein constituents. The APOE gene is mapped to chromosome 19 in a cluster with APOC1 and APOC2. Defects in apolipoprotein E result in familial dysbetalipoproteinemia, or type III hyperlipoproteinemia (HLP III), in which increased plasma cholesterol and triglycerides are the consequence of impaired clearance of chylomicron and VLDL remnants.

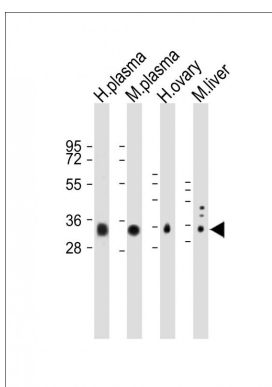
References

Wood, K.C., *Appl Physiol Nutr Metab* 33 (4), 761-768 (2008) Pemberton, L., (er) *HIV Med.* (2008) In press
Sundermann, E.E., (er) *Horm Behav* (2008) In press Christensen, H., (er) *BMC Geriatr* 8, 14 (2008)

Images

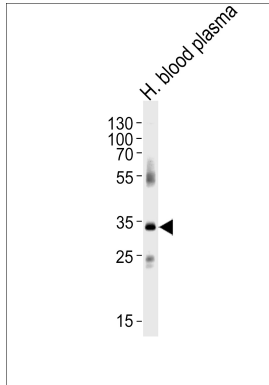
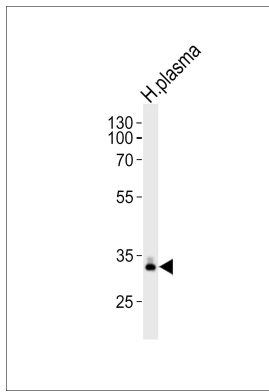


All lanes : Anti-APOE Antibody (C-term) at 1:2000 dilution
Lane 1: Human plasma whole lysate Lane 2: Mouse plasma whole lysate Lane 3: Mouse liver whole lysate
Lysates/proteins at 20 µg per lane. Secondary Goat Anti-Rabbit IgG, (H+L), Peroxidase conjugated at 1/10000 dilution. Predicted band size : 36kDa Blocking/Dilution buffer: 5% NFDM/TBST.

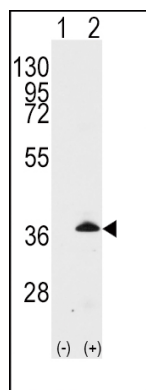


All lanes : Anti-APOE Antibody (C-term) at 1:1000 dilution
Lane 1: Human plasma lysate Lane 2: Mouse plasma lysate Lane 3: Human ovary lysate Lane 4: Mouse liver lysate
Lysates/proteins at 20 µg per lane. Secondary Goat Anti-Rabbit IgG, (H+L), Peroxidase conjugated at 1/10000 dilution. Predicted band size : 36 kDa Blocking/Dilution buffer: 5% NFDM/TBST.

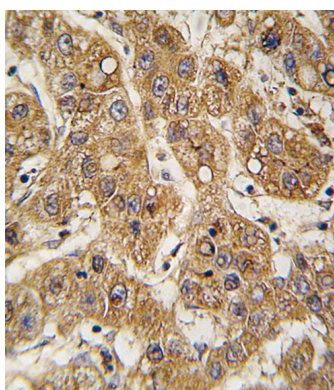
Western blot analysis of lysate from human plasma tissue lysate, using APOE Antibody (C-term)(Cat. #AP7587b). AP7587b was diluted at 1:1000. A goat anti-rabbit IgG H&L(HRP) at 1:10000 dilution was used as the secondary antibody. Lysate at 20ug.



Western blot analysis of lysate from human blood plasma tissue lysate, using APOE Antibody (C-term)(Cat. #AP7587b). AP7587b was diluted at 1:1000 at each lane. A goat anti-rabbit IgG H&L(HRP) at 1:5000 dilution was used as the secondary antibody. Lysate at 35ug per lane.



Western blot analysis of APOE(arrow) using rabbit polyclonal APOE Antibody (C-term) (Cat.#AP7587b). 293 cell lysates (2 ug/lane) either nontransfected (Lane 1) or transiently transfected with the APOE gene (Lane 2) (Origene Technologies).



Formalin-fixed and paraffin-embedded human hepatocarcinoma tissue reacted with APOE antibody (C-term) (Cat.#AP7587b), which was peroxidase-conjugated to the secondary antibody, followed by DAB staining. This data demonstrates the use of this antibody for immunohistochemistry; clinical relevance has not been evaluated.

Citations

- [ApoE-fragment/Aβ heteromers in the brain of patients with Alzheimer's disease.](#)
- [Apolipoprotein E interacts with hepatitis C virus nonstructural protein 5A and determines assembly of infectious particles.](#)
- [Using differential solubilization and 2-D gel electrophoresis to visualize increased numbers of proteins in the human cortex and caudate nucleus and putamen.](#)

Please note: All products are 'FOR RESEARCH USE ONLY. NOT FOR USE IN DIAGNOSTIC OR THERAPEUTIC PROCEDURES'.