

PHAPI2 Rabbit mAb

Catalog # AP75903

Product Information

Application	WB, IHC-P, IHC-F, ICC
Primary Accession	Q92688
Reactivity	Human, Rat
Host	Rabbit
Clonality	Monoclonal Antibody
Calculated MW	28788

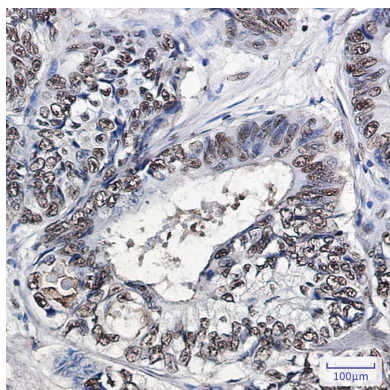
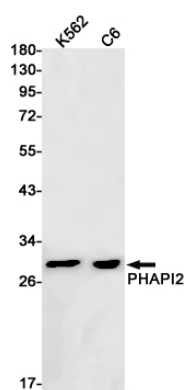
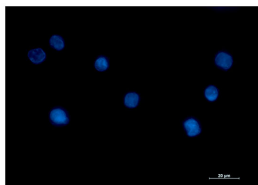
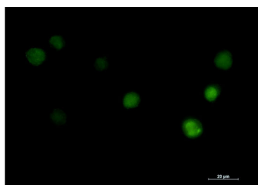
Additional Information

Gene ID	10541
Other Names	ANP32B
Dilution	WB~~1/500-1/1000 IHC-P~~N/A IHC-F~~N/A ICC~~N/A
Format	Liquid

Protein Information

Name	ANP32B
Synonyms	APRIL, PHAPI2
Function	Multifunctional protein that is involved in the regulation of many processes including cell proliferation, apoptosis, cell cycle progression or transcription (PubMed: 18039846 , PubMed: 20015864). Regulates the proliferation of neuronal stem cells, differentiation of leukemic cells and progression from G1 to S phase of the cell cycle. As negative regulator of caspase-3-dependent apoptosis, may act as an antagonist of ANP32A in regulating tissue homeostasis (PubMed: 20015864). Exhibits histone chaperone properties, able to recruit histones to certain promoters, thus regulating the transcription of specific genes (PubMed: 18039846 , PubMed: 20538007). Also plays an essential role in the nucleocytoplasmic transport of specific mRNAs via the uncommon nuclear mRNA export receptor XPO1/CRM1 (PubMed: 17178712). Participates in the regulation of adequate adaptive immune responses by acting on mRNA expression and cell proliferation (By similarity).
Cellular Location	[Isoform 1]: Nucleus. Cytoplasm Note=Accumulates in the nuclei at the S phase.
Tissue Location	Expressed in heart, lung, pancreas, prostate and in spleen, thymus and placenta.

Images



Please note: All products are 'FOR RESEARCH USE ONLY. NOT FOR USE IN DIAGNOSTIC OR THERAPEUTIC PROCEDURES'.