

# POLDIP2 Rabbit mAb

Catalog # AP75931

## Product Information

---

<b>Application</b>	WB, IP
<b>Primary Accession</b>	<a href="#">Q9Y2S7</a>
<b>Reactivity</b>	Human
<b>Host</b>	Rabbit
<b>Clonality</b>	Monoclonal Antibody
<b>Calculated MW</b>	42033

## Additional Information

---

<b>Gene ID</b>	26073
<b>Other Names</b>	POLDIP2
<b>Dilution</b>	WB~~1/500-1/1000 IP~~N/A
<b>Format</b>	50mM Tris-Glycine(pH 7.4), 0.15M NaCl, 40%Glycerol, 0.01% sodium azide and 0.05% BSA.
<b>Storage</b>	Store at 4°C short term. Aliquot and store at -20°C long term. Avoid freeze/thaw cycles.

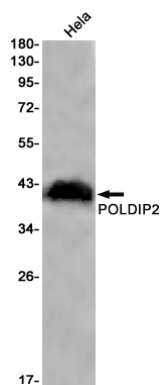
## Protein Information

---

<b>Name</b>	POLDIP2 {ECO:0000303 PubMed:26984527, ECO:0000312 HGNC:HGNC:23781}
<b>Function</b>	Involved in DNA damage tolerance by regulating translesion synthesis (TLS) of templates carrying DNA damage lesions such as 8oxoG and abasic sites (PubMed: <a href="#">24191025</a> ). May act by stimulating activity of DNA polymerases involved in TLS, such as PRIMPOL and polymerase delta (POLD1) (PubMed: <a href="#">24191025</a> , PubMed: <a href="#">26984527</a> ).
<b>Cellular Location</b>	Mitochondrion matrix. Nucleus Note=Mainly localizes to the mitochondrial matrix; a small fraction localizes in the nucleus.

## Images

---



Please note: All products are 'FOR RESEARCH USE ONLY. NOT FOR USE IN DIAGNOSTIC OR THERAPEUTIC PROCEDURES'.