

# PRSS8 Rabbit mAb

Catalog # AP75965

## Product Information

---

|                          |                        |
|--------------------------|------------------------|
| <b>Application</b>       | WB, IP                 |
| <b>Primary Accession</b> | <a href="#">Q16651</a> |
| <b>Reactivity</b>        | Human                  |
| <b>Host</b>              | Rabbit                 |
| <b>Clonality</b>         | Monoclonal Antibody    |
| <b>Calculated MW</b>     | 36431                  |

## Additional Information

---

|                    |                          |
|--------------------|--------------------------|
| <b>Gene ID</b>     | 5652                     |
| <b>Other Names</b> | PRSS8                    |
| <b>Dilution</b>    | WB~~1/500-1/1000 IP~~N/A |
| <b>Format</b>      | Liquid                   |

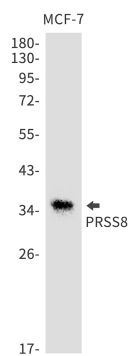
## Protein Information

---

|                          |   |
|--------------------------|---|
| <b>Name</b>              | PRSS8   |
| <b>Function</b>          | Possesses a trypsin-like cleavage specificity with a preference for poly-basic substrates. Stimulates epithelial sodium channel (ENaC) activity through activating cleavage of the gamma subunits (SCNN1G).                                       |
| <b>Cellular Location</b> | [Prostasin]: Cell membrane; Single-pass membrane protein [Prostasin heavy chain]: Secreted, extracellular space. Note=Found in the seminal fluid. Secreted after cleavage of its C-terminus   |
| <b>Tissue Location</b>   | Found in prostate, liver, salivary gland, kidney, lung, pancreas, colon, bronchus and renal proximal tubular cells. In the prostate gland it may be synthesized in epithelial cells, secreted into the ducts, and excreted into the seminal fluid |

## Images

---



Please note: All products are 'FOR RESEARCH USE ONLY. NOT FOR USE IN DIAGNOSTIC OR THERAPEUTIC PROCEDURES'.