

PSF1 Rabbit mAb

Catalog # AP75966

Product Information

Application	WB, FC
Primary Accession	Q14691
Reactivity	Rat, Human, Mouse
Host	Rabbit
Clonality	Monoclonal Antibody
Isotype	IgG
Conjugate	Unconjugated
Purification	Affinity Purified
Calculated MW	23 KDa

Additional Information

Other Names	GINS1
Dilution	WB~~1:1000-1:5000 FC~~1:50-1:100
Format	Liquid in 50mM Tris-Glycine(pH 7.4), 0.15M NaCl, 40%Glycerol, 0.01% sodium azide and 0.05% BSA.
Storage	Store at 4°C short term. Aliquot and store at -20°C long term. Avoid freeze/thaw cycles.

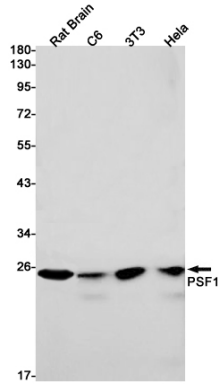
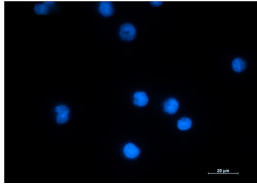
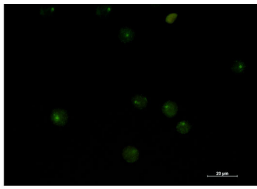
Protein Information

Background

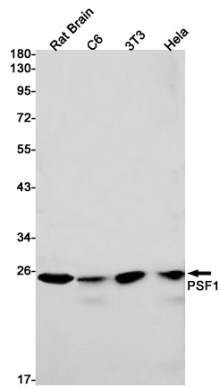
GINS1, also known as Partner of SLD Five 1 (PSF1) is a member of the GINS (Go-Ichi-Nii-San) complex, which plays a vital role in the initiation and elongation of DNA replication (PMID: 34414190). GINS1 was initially found to be predominantly expressed in highly proliferating cells instead of mature cells. Later on, it was found that GINS was involved in the tumorigenesis of various cancers, including breast cancer, colorectal cancer, and hepatocellular carcinoma (PMID: 36065190).

Images

Immunocytochemistry analysis of PSF1 (green) in Jurkat using PSF1 antibody, and DAPI(blue).



Western blot analysis of PSF1 in rat Brain, C6, 3T3, HeLa lysates using PSF1 antibody.



Please note: All products are 'FOR RESEARCH USE ONLY. NOT FOR USE IN DIAGNOSTIC OR THERAPEUTIC PROCEDURES'.