

SPI1 Rabbit mAb

Catalog # AP75976

Product Information

Application	WB, IHC-P
Primary Accession	P17947
Reactivity	Human, Mouse
Host	Rabbit
Clonality	Monoclonal Antibody
Calculated MW	31083

Additional Information

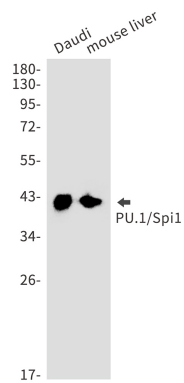
Gene ID	6688
Other Names	SPI1
Dilution	WB~~1/500-1/1000 IHC-P~~N/A
Format	Liquid

Protein Information

Name	SPI1
Function	<p>Pioneer transcription factor, which controls hematopoietic cell fate by decompacting stem cell heterochromatin and allowing other transcription factors to enter otherwise inaccessible genomic sites. Once in open chromatin, can directly control gene expression by binding genetic regulatory elements and can also more broadly influence transcription by recruiting transcription factors, such as interferon regulatory factors (IRFs), to otherwise inaccessible genomic regions (PubMed:23658224, PubMed:33951726). Transcriptionally activates genes important for myeloid and lymphoid lineages, such as CSF1R (By similarity). Transcriptional activation from certain promoters, possibly containing low affinity binding sites, is achieved cooperatively with other transcription factors. FCER1A transactivation is achieved in cooperation with GATA1 (By similarity). May be particularly important for the pro- to pre-B cell transition (PubMed:33951726). Binds (via the ETS domain) onto the purine-rich DNA core sequence 5'-GAGGAA-3', also known as the PU-box (PubMed:33951726). In vitro can bind RNA and interfere with pre-mRNA splicing (By similarity).</p>
Cellular Location	Nucleus {ECO:0000255 PROSITE-ProRule:PRU00237, ECO:0000269 PubMed:33951726}
Tissue Location	In the bone marrow, concentrated in hematopoietic stem cell, lymphoid progenitor, myeloid lineage (granulocyte macrophage progenitors, classical

dendritic cells, monocytes) and B-cell clusters Among B-cells, predominantly expressed in pre-B1 cells (PubMed:33951726). Expressed in germinal center B-cells (PubMed:23166356).

Images



Please note: All products are 'FOR RESEARCH USE ONLY. NOT FOR USE IN DIAGNOSTIC OR THERAPEUTIC PROCEDURES'.