

RAB45 Rabbit mAb

Catalog # AP75985

Product Information

Application	WB, FC
Primary Accession	Q8IZ41
Reactivity	Rat, Human, Mouse
Host	Rabbit
Clonality	Monoclonal Antibody
Isotype	IgG
Conjugate	Unconjugated
Purification	Affinity Purified
Calculated MW	82879

Additional Information

Gene ID	158158
Other Names	RASEF
Dilution	WB~~1:1000-1:5000 FC~~1:20-1:50
Format	Liquid in 50mM Tris-Glycine(pH 7.4), 0.15M NaCl, 40%Glycerol, 0.01% sodium azide and 0.05% BSA.
Storage	Store at 4°C short term. Aliquot and store at -20°C long term. Avoid freeze/thaw cycles.

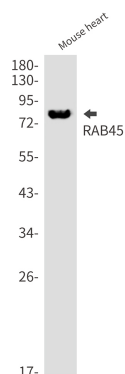
Protein Information

Name	RASEF (HGNC:26464)
Function	[Isoform 1]: Rab GTPase that acts as a dynein adapter protein, thereby activating dynein-mediated transport and dynein- dynactin motility on microtubules (PubMed: 30814157). RASEF-mediated dynein motility is Ca(2+)-independent (PubMed: 30814157). Also regulates the formation and sorting of zymogen granules and secretion of digestive enzymes by pancreatic acinar cells (By similarity).
Cellular Location	[Isoform 1]: Cytoplasm, perinuclear region. Cytoplasm Golgi apparatus. Early endosome. Late endosome. Lysosome Note=Mostly diffusely distributed in the cytoplasm and partially localized to Golgi and endo-lysosomes in pancreatic cells
Tissue Location	Down-regulated in cutaneous melanoma cells but not in breast cancer cells.

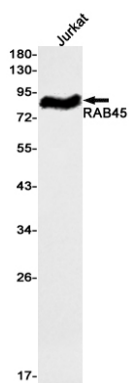
Background

Binds predominantly GDP, and also GTP.

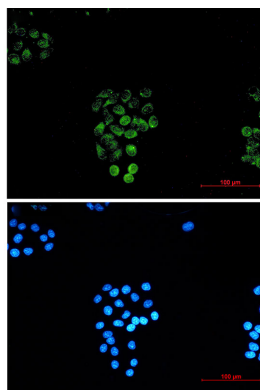
Images



Western blot analysis of RAB45 in mouse heart lysates using Rab45 antibody.



Western blot analysis of RAB45 in Jurkat lysates using RAB45 antibody.



Immunocytochemistry analysis of RAB45 (green) in HeLa using RAB45 antibody, and DAPI(blue)

Please note: All products are 'FOR RESEARCH USE ONLY. NOT FOR USE IN DIAGNOSTIC OR THERAPEUTIC PROCEDURES'.