

# Cyclin B1 Antibody (S126)

Affinity Purified Rabbit Polyclonal Antibody (Pab)

Catalog # AP7598b

## Product Information

---

<b>Application</b>	WB, E
<b>Primary Accession</b>	<a href="#">P14635</a>
<b>Reactivity</b>	Human
<b>Host</b>	Rabbit
<b>Clonality</b>	Polyclonal
<b>Isotype</b>	Rabbit IgG
<b>Clone Names</b>	RB07923
<b>Calculated MW</b>	48337
<b>Antigen Region</b>	104-133

## Additional Information

---

<b>Gene ID</b>	891
<b>Other Names</b>	G2/mitotic-specific cyclin-B1, CCNB1, CCNB
<b>Target/Specificity</b>	This Cyclin B1 antibody is generated from rabbits immunized with a KLH conjugated synthetic peptide between 104-133 amino acids from human Cyclin B1.
<b>Dilution</b>	WB~~1:1000 E~~Use at an assay dependent concentration.
<b>Format</b>	Purified polyclonal antibody supplied in PBS with 0.09% (W/V) sodium azide. This antibody is purified through a protein A column, followed by peptide affinity purification.
<b>Storage</b>	Maintain refrigerated at 2-8°C for up to 2 weeks. For long term storage store at -20°C in small aliquots to prevent freeze-thaw cycles.
<b>Precautions</b>	Cyclin B1 Antibody (S126) is for research use only and not for use in diagnostic or therapeutic procedures.

## Protein Information

---

<b>Name</b>	CCNB1
<b>Synonyms</b>	CCNB
<b>Function</b>	Essential for the control of the cell cycle at the G2/M (mitosis) transition.
<b>Cellular Location</b>	Cytoplasm. Nucleus. Cytoplasm, cytoskeleton, microtubule organizing center,

## Background

---

Cyclin B1 is a regulatory protein involved in mitosis. It complexes with p34(cdc2) to form the maturation-promoting factor (MPF).

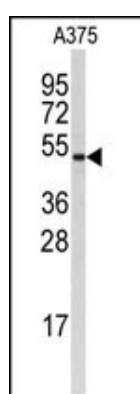
## References

---

Yoshida, T., et al., Ann. Oncol. 15(2):252-256 (2004). Chang, D.C., et al., J. Biol. Chem. 278(39):37865-37873 (2003). Sanchez, V., et al., J. Virol. 77(24):13214-13224 (2003). Li, J.Q., et al., Int. J. Oncol. 22(5):1101-1110 (2003). Porter, L.A., et al., Blood 101(5):1928-1933 (2003).

## Images

---



Western blot analysis of anti-Cyclin B1 Antibody (S126) (Cat.#AP7598b) in A375 cell line lysates (35ug/lane). Cyclin B1 (arrow) was detected using the purified Pab.

## Citations

---

- [Targeting the overexpressed CREB inhibits esophageal squamous cell carcinoma cell growth.](#)

Please note: All products are 'FOR RESEARCH USE ONLY. NOT FOR USE IN DIAGNOSTIC OR THERAPEUTIC PROCEDURES'.