

# Radixin Rabbit mAb

Catalog # AP75995

## Product Information

---

<b>Application</b>	WB, IHC-P, IP
<b>Primary Accession</b>	<a href="#">P35241</a>
<b>Reactivity</b>	Human, Mouse, Rat
<b>Host</b>	Rabbit
<b>Clonality</b>	Monoclonal Antibody
<b>Calculated MW</b>	68564

## Additional Information

---

<b>Gene ID</b>	5962
<b>Other Names</b>	RDX
<b>Dilution</b>	WB~~1/500-1/1000 IHC-P~~N/A IP~~1/20
<b>Format</b>	Liquid

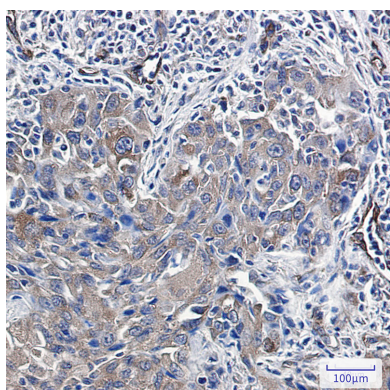
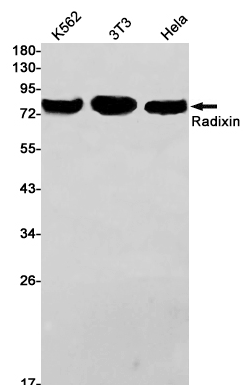
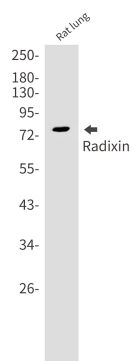
## Protein Information

---

<b>Name</b>	RDX
<b>Function</b>	Probably plays a crucial role in the binding of the barbed end of actin filaments to the plasma membrane.
<b>Cellular Location</b>	Cell membrane; Peripheral membrane protein; Cytoplasmic side. Cytoplasm, cytoskeleton. Cleavage furrow. Cell projection, microvillus {ECO:0000250 UniProtKB:P26043}. Cell projection, stereocilium {ECO:0000250 UniProtKB:P26043}. Note=Enriched at the stereocilium base with very low levels in the shaft of stereociliary bundles (By similarity). Highly concentrated in the undercoat of the cell-to-cell adherens junction and the cleavage furrow in the interphase and mitotic phase, respectively {ECO:0000250 UniProtKB:P26043}

## Images

---



Please note: All products are 'FOR RESEARCH USE ONLY. NOT FOR USE IN DIAGNOSTIC OR THERAPEUTIC PROCEDURES'.