

RASSF2 Rabbit mAb

Catalog # AP76007

Product Information

Application	WB
Primary Accession	P50749
Reactivity	Human
Host	Rabbit
Clonality	Monoclonal Antibody
Calculated MW	37790

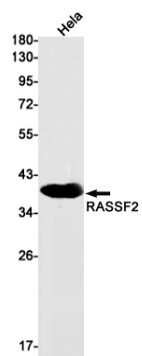
Additional Information

Gene ID	9770
Other Names	RASSF2
Dilution	WB~~1/500-1/1000
Format	50mM Tris-Glycine(pH 7.4), 0.15M NaCl, 40%Glycerol, 0.01% sodium azide and 0.05% BSA.

Protein Information

Name	RASSF2
Synonyms	CENP-34 {ECO:0000303 PubMed:20813266}, K
Function	Potential tumor suppressor. Acts as a KRAS-specific effector protein. May promote apoptosis and cell cycle arrest. Stabilizes STK3/MST2 by protecting it from proteasomal degradation.
Cellular Location	Nucleus. Cytoplasm. Chromosome, centromere, kinetochore. Note=Translocates to the cytoplasm in the presence of STK3/MST2 and STK4/MST1
Tissue Location	Widely expressed with highest levels in brain, placenta, peripheral blood and lung. Frequently down-regulated in lung tumor cell lines.

Images



Please note: All products are 'FOR RESEARCH USE ONLY. NOT FOR USE IN DIAGNOSTIC OR THERAPEUTIC PROCEDURES'.