

# RPA32 Rabbit mAb

Catalog # AP76031

## Product Information

---

<b>Application</b>	WB, IHC-P, FC, IP
<b>Primary Accession</b>	<a href="#">P15927</a>
<b>Reactivity</b>	Rat, Human, Mouse
<b>Host</b>	Rabbit
<b>Clonality</b>	Monoclonal Antibody
<b>Isotype</b>	IgG
<b>Conjugate</b>	Unconjugated
<b>Purification</b>	Affinity Purified
<b>Calculated MW</b>	29 KDa

## Additional Information

---

<b>Other Names</b>	RPA2
<b>Dilution</b>	WB~~1:500-1:1000 IHC-P~~N/A FC~~1:100-1:200 IP~~1:20
<b>Format</b>	Liquid in 50mM Tris-Glycine(pH 7.4), 0.15M NaCl, 40%Glycerol, 0.01% sodium azide and 0.05% BSA.
<b>Storage</b>	Store at 4°C short term. Aliquot and store at -20°C long term. Avoid freeze/thaw cycles.

## Protein Information

---

### Background

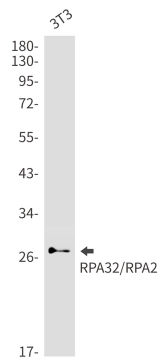
---

As part of the heterotrimeric replication protein A complex (RPA/RP-A), binds and stabilizes single-stranded DNA intermediates, that form during DNA replication or upon DNA stress. It prevents their reannealing and in parallel, recruits and activates different proteins and complexes involved in DNA metabolism. Thereby, it plays an essential role both in DNA replication and the cellular response to DNA damage. In the cellular response to DNA damage, the RPA complex controls DNA repair and DNA damage checkpoint activation.

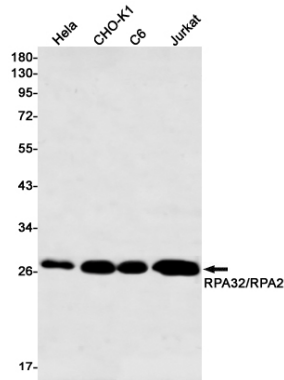
### Images

---

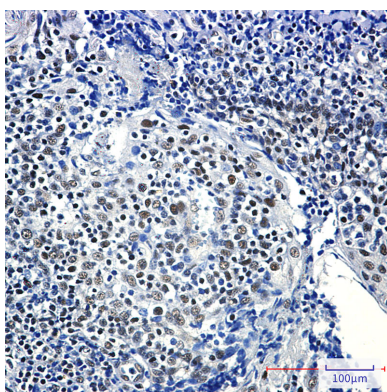
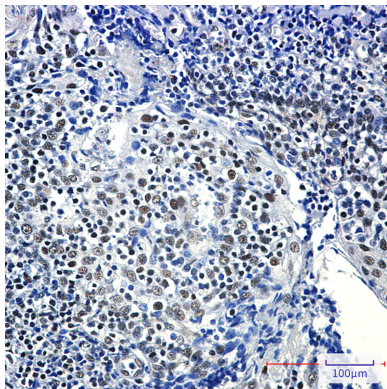
Western blot analysis of RPA32/RPA2 in 3T3 lysates using RPA32 antibody.



Western blot analysis of RPA32/RPA2 in HeLa, CHO-K1, C6, Jurkat lysates using RPA32/RPA2 antibody.



Immunohistochemistry analysis of paraffin-embedded Human tonsil using RPA32/RPA2 antibody. High-pressure and temperature Sodium Citrate pH 6.0 was used for antigen retrieval.



Please note: All products are 'FOR RESEARCH USE ONLY. NOT FOR USE IN DIAGNOSTIC OR THERAPEUTIC PROCEDURES'.