

Exocyst Complex Component 3 Rabbit mAb

Catalog # AP76040

Product Information

Application	WB, IP, ICC
Primary Accession	O60645
Reactivity	Human, Mouse, Rat
Host	Rabbit
Clonality	Monoclonal Antibody
Calculated MW	85567

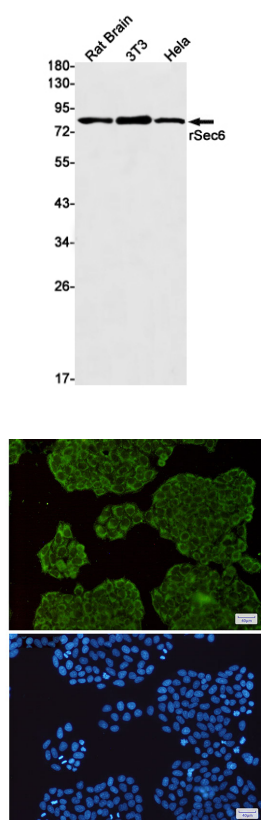
Additional Information

Gene ID	11336
Other Names	EXOC3
Dilution	WB~~1/500-1/1000 IP~~N/A ICC~~N/A
Format	50mM Tris-Glycine(pH 7.4), 0.15M NaCl, 40%Glycerol, 0.01% sodium azide and 0.05% BSA.
Storage	Store at 4°C short term. Aliquot and store at -20°C long term. Avoid freeze/thaw cycles.

Protein Information

Name	EXOC3
Synonyms	SEC6, SEC6L1
Function	Component of the exocyst complex involved in the docking of exocytic vesicles with fusion sites on the plasma membrane.
Cellular Location	Cytoplasm {ECO:0000250 UniProtKB:O54921}. Cytoplasm, perinuclear region {ECO:0000250 UniProtKB:O54921}. Cell projection, growth cone {ECO:0000250 UniProtKB:O54921}. Midbody. Golgi apparatus. Cell projection, neuron projection {ECO:0000250 UniProtKB:Q62825}. Note=Perinuclear in undifferentiated cells. Redistributes to growing neurites and growth cones during neuronal differentiation (By similarity). During mitosis, early recruitment to the midbody requires RALA, but not RALB, and EXOC2. In late stages of cytokinesis, localization to the midbody is RALB- dependent (PubMed:18756269). {ECO:0000250 UniProtKB:O54921, ECO:0000269 PubMed:18756269}
Tissue Location	Expressed in epididymis (at protein level).

Images



Please note: All products are 'FOR RESEARCH USE ONLY. NOT FOR USE IN DIAGNOSTIC OR THERAPEUTIC PROCEDURES'.