

SAE1 Rabbit mAb

Catalog # AP76050

Product Information

Application	WB, ICC
Primary Accession	Q9UBE0
Reactivity	Human
Host	Rabbit
Clonality	Monoclonal Antibody
Calculated MW	38450

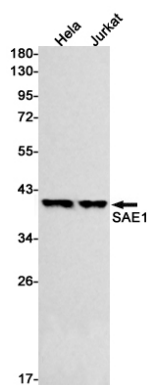
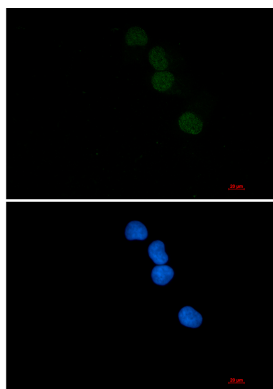
Additional Information

Gene ID	10055
Other Names	SAE1
Dilution	WB~~1/500-1/1000 ICC~~N/A
Format	Liquid

Protein Information

Name	SAE1
Synonyms	AOS1, SUA1, UBLE1A
Function	The heterodimer acts as an E1 ligase for SUMO1, SUMO2, SUMO3, and probably SUMO4. It mediates ATP-dependent activation of SUMO proteins followed by formation of a thioester bond between a SUMO protein and a conserved active site cysteine residue on UBA2/SAE2.
Cellular Location	Nucleus.
Tissue Location	Expression level increases during S phase and drops in G2 phase (at protein level).

Images



Please note: All products are 'FOR RESEARCH USE ONLY. NOT FOR USE IN DIAGNOSTIC OR THERAPEUTIC PROCEDURES'.