

SAFB1 Rabbit mAb

Catalog # AP76051

Product Information

Application	WB, IHC-P, IHC-F, ICC
Primary Accession	Q15424
Reactivity	Human, Mouse
Host	Rabbit
Clonality	Monoclonal Antibody
Calculated MW	102642

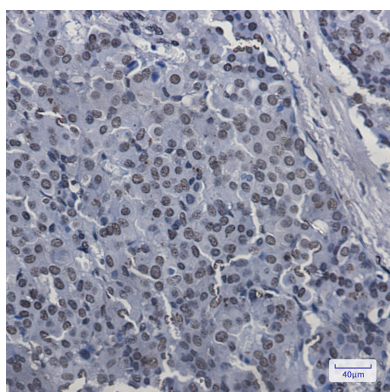
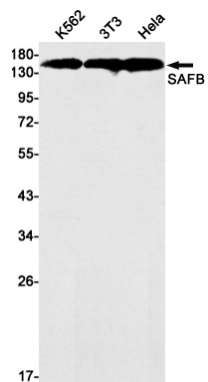
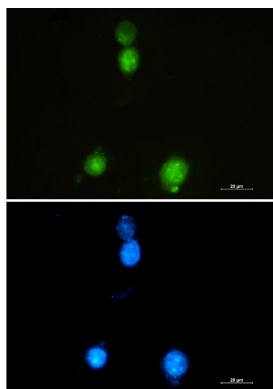
Additional Information

Gene ID	6294
Other Names	SAFB
Dilution	WB~~1/500-1/1000 IHC-P~~N/A IHC-F~~N/A ICC~~N/A
Format	Liquid

Protein Information

Name	SAFB
Synonyms	HAP, HET, SAFB1
Function	Binds to scaffold/matrix attachment region (S/MAR) DNA and forms a molecular assembly point to allow the formation of a 'transcriptosomal' complex (consisting of SR proteins and RNA polymerase II) coupling transcription and RNA processing (PubMed: 9671816). Functions as an estrogen receptor corepressor and can also bind to the HSP27 promoter and decrease its transcription (PubMed: 12660241). Thereby acts as a negative regulator of cell proliferation (PubMed: 12660241). When associated with RBMX, binds to and stimulates transcription from the SREBF1 promoter (By similarity).
Cellular Location	Nucleus
Tissue Location	Ubiquitous. Expressed at high levels in the CNS and at low levels in the liver. Expressed in a wide number of breast cancer cell lines

Images



Please note: All products are 'FOR RESEARCH USE ONLY. NOT FOR USE IN DIAGNOSTIC OR THERAPEUTIC PROCEDURES'.