

SC35 Rabbit mAb

Catalog # AP76055

Product Information

Application	WB, IHC-P, IP
Primary Accession	Q01130
Reactivity	Human, Rat
Host	Rabbit
Clonality	Monoclonal Antibody
Calculated MW	25476

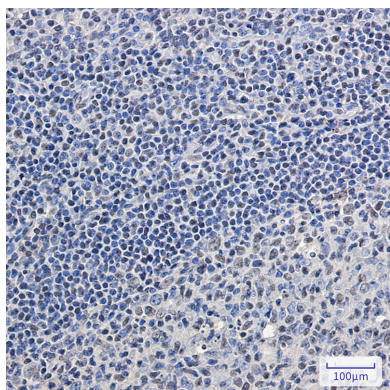
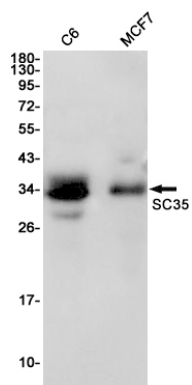
Additional Information

Gene ID	6427
Other Names	SRSF2
Dilution	WB~~1/500-1/1000 IHC-P~~N/A IP~~N/A
Format	Liquid

Protein Information

Name	SRSF2
Synonyms	SFRS2
Function	Necessary for the splicing of pre-mRNA. It is required for formation of the earliest ATP-dependent splicing complex and interacts with spliceosomal components bound to both the 5'- and 3'-splice sites during spliceosome assembly. It also is required for ATP-dependent interactions of both U1 and U2 snRNPs with pre-mRNA. Interacts with other spliceosomal components, via the RS domains, to form a bridge between the 5'- and 3'-splice site binding components, U1 snRNP and U2AF. Binds to purine-rich RNA sequences, either 5'-AGSAGAGTA-3' (S=C or G) or 5'-GTTCGAGTA-3'. Can bind to beta-globin mRNA and commit it to the splicing pathway. The phosphorylated form (by SRPK2) is required for cellular apoptosis in response to cisplatin treatment.
Cellular Location	Nucleus. Nucleus, nucleoplasm. Nucleus speckle. Note=Phosphorylation by SRPK2 provokes its redistribution from the nuclear speckle to nucleoplasm

Images



Please note: All products are 'FOR RESEARCH USE ONLY. NOT FOR USE IN DIAGNOSTIC OR THERAPEUTIC PROCEDURES'.