

SCARB1 Rabbit mAb

Catalog # AP76058

Product Information

Application	WB
Primary Accession	Q8WTV0
Reactivity	Human, Mouse, Rat
Host	Rabbit
Clonality	Monoclonal Antibody
Calculated MW	60878

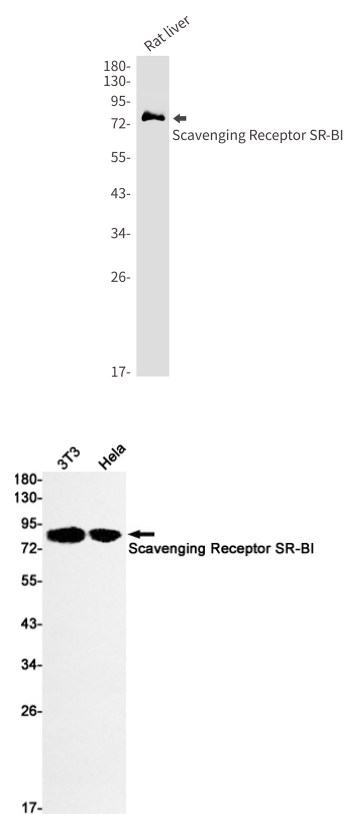
Additional Information

Gene ID	949
Other Names	SCARB1
Dilution	WB~~1/500-1/1000
Format	50mM Tris-Glycine(pH 7.4), 0.15M NaCl, 40%Glycerol, 0.01% sodium azide and 0.05% BSA.
Storage	Store at 4°C short term. Aliquot and store at -20°C long term. Avoid freeze/thaw cycles.

Protein Information

Name	SCARB1
Synonyms	CD36L1, CLA1
Function	Receptor for different ligands such as phospholipids, cholesterol ester, lipoproteins, phosphatidylserine and apoptotic cells (PubMed: 12016218 , PubMed: 12519372 , PubMed: 21226579). Receptor for HDL, mediating selective uptake of cholesteryl ether and HDL-dependent cholesterol efflux (PubMed: 26965621). Also facilitates the flux of free and esterified cholesterol between the cell surface and apoB-containing lipoproteins and modified lipoproteins, although less efficiently than HDL. May be involved in the phagocytosis of apoptotic cells, via its phosphatidylserine binding activity (PubMed: 12016218).
Cellular Location	Cell membrane; Multi-pass membrane protein. Membrane, caveola {ECO:0000250 UniProtKB:Q61009}; Multi-pass membrane protein Note=Predominantly localized to cholesterol and sphingomyelin-enriched domains within the plasma membrane, called caveolae
Tissue Location	Widely expressed.

Images



Please note: All products are 'FOR RESEARCH USE ONLY. NOT FOR USE IN DIAGNOSTIC OR THERAPEUTIC PROCEDURES'.