

SDHA Rabbit mAb

Catalog # AP76062

Product Information

Application	WB, IHC-P, IHC-F, IP, ICC
Primary Accession	P31040
Reactivity	Human, Mouse, Rat
Host	Rabbit
Clonality	Monoclonal Antibody
Calculated MW	72692

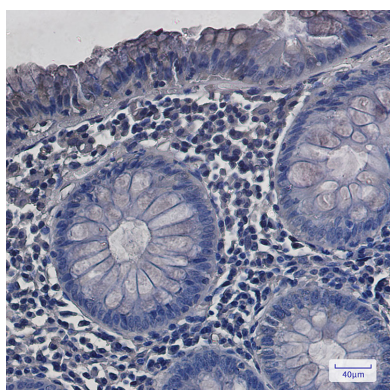
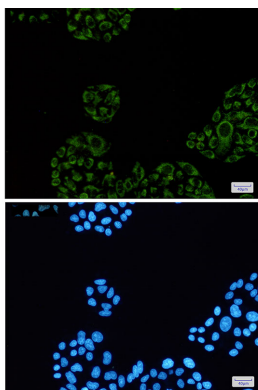
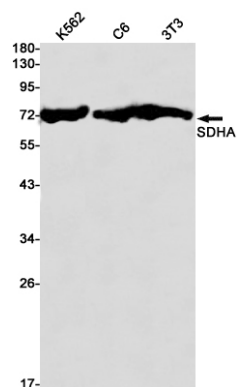
Additional Information

Gene ID	6389
Other Names	SDHA
Dilution	WB~~1/500-1/1000 IHC-P~~N/A IHC-F~~N/A IP~~N/A ICC~~N/A
Format	Liquid

Protein Information

Name	SDHA
Synonyms	SDH2, SDHF
Function	Flavoprotein (FP) subunit of succinate dehydrogenase (SDH) that is involved in complex II of the mitochondrial electron transport chain and is responsible for transferring electrons from succinate to ubiquinone (coenzyme Q) (PubMed: 10746566 , PubMed: 24781757). SDH also oxidizes malate to the non-canonical enol form of oxaloacetate, enol- oxaloacetate (By similarity). Enol-oxaloacetate, which is a potent inhibitor of the succinate dehydrogenase activity, is further isomerized into keto-oxaloacetate (By similarity). Can act as a tumor suppressor (PubMed: 20484225).
Cellular Location	Mitochondrion inner membrane; Peripheral membrane protein; Matrix side

Images



Please note: All products are 'FOR RESEARCH USE ONLY. NOT FOR USE IN DIAGNOSTIC OR THERAPEUTIC PROCEDURES'.