

# Semaphorin 4D Rabbit mAb

Catalog # AP76067

## Product Information

---

Application	WB, ICC
Primary Accession	<a href="#">Q92854</a>
Reactivity	Human
Host	Rabbit
Clonality	Monoclonal Antibody
Calculated MW	96150

## Additional Information

---

Gene ID	10507
Other Names	SEMA4D
Dilution	WB~~1/500-1/1000 ICC~~N/A
Format	50mM Tris-Glycine(pH 7.4), 0.15M NaCl, 40%Glycerol, 0.01% sodium azide and 0.05% BSA.
Storage	Store at 4°C short term. Aliquot and store at -20°C long term. Avoid freeze/thaw cycles.

## Protein Information

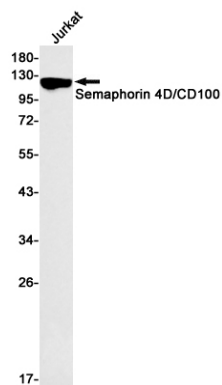
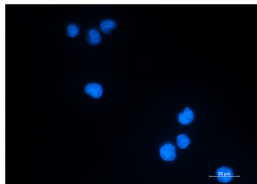
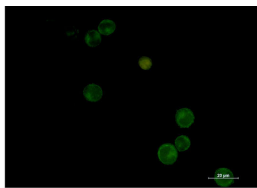
---

Name	SEMA4D
Synonyms	C9orf164, CD100, SEMAJ
Function	Cell surface receptor for PLXNB1 and PLXNB2 that plays an important role in cell-cell signaling (PubMed: <a href="#">20877282</a> ). Regulates GABAergic synapse development (By similarity). Promotes the development of inhibitory synapses in a PLXNB1-dependent manner (By similarity). Modulates the complexity and arborization of developing neurites in hippocampal neurons by activating PLXNB1 and interaction with PLXNB1 mediates activation of RHOA (PubMed: <a href="#">19788569</a> ). Promotes the migration of cerebellar granule cells (PubMed: <a href="#">16055703</a> ). Plays a role in the immune system; induces B-cells to aggregate and improves their viability (in vitro) (PubMed: <a href="#">8876214</a> ). Induces endothelial cell migration through the activation of PTK2B/PYK2, SRC, and the phosphatidylinositol 3-kinase-AKT pathway (PubMed: <a href="#">16055703</a> ).
Cellular Location	Cell membrane; Single-pass type I membrane protein
Tissue Location	Strongly expressed in skeletal muscle, peripheral blood lymphocytes, spleen, and thymus and also expressed at lower levels in testes, brain, kidney, small

intestine, prostate, heart, placenta, lung and pancreas, but not in colon and liver

## Images

---



Please note: All products are 'FOR RESEARCH USE ONLY. NOT FOR USE IN DIAGNOSTIC OR THERAPEUTIC PROCEDURES'.