

# SERCA2 ATPase Rabbit mAb

Catalog # AP76070

## Product Information

---

<b>Application</b>	WB, IHC-P, IHC-F, ICC
<b>Primary Accession</b>	<a href="#">P16615</a>
<b>Reactivity</b>	Human, Rat
<b>Host</b>	Rabbit
<b>Clonality</b>	Monoclonal Antibody
<b>Calculated MW</b>	114757

## Additional Information

---

<b>Gene ID</b>	488
<b>Other Names</b>	ATP2A2
<b>Dilution</b>	WB~~1/500-1/1000 IHC-P~~N/A IHC-F~~N/A ICC~~N/A
<b>Format</b>	50mM Tris-Glycine(pH 7.4), 0.15M NaCl, 40%Glycerol, 0.01% sodium azide and 0.05% BSA.

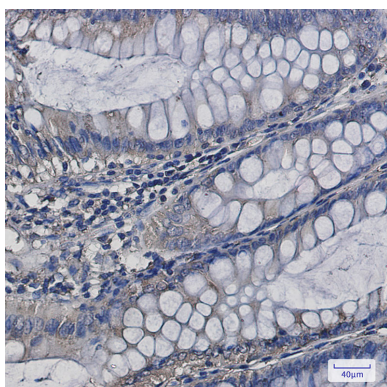
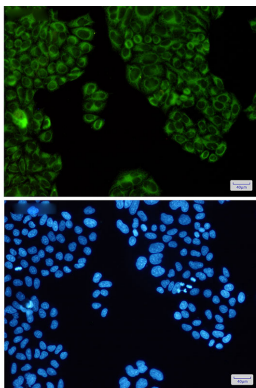
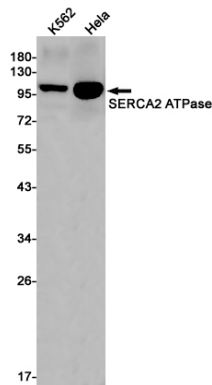
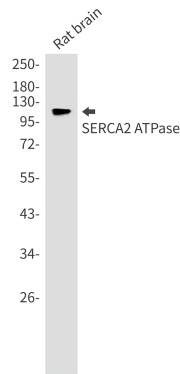
## Protein Information

---

<b>Name</b>	ATP2A2 ( <a href="#">HGNC:812</a> )
<b>Synonyms</b>	ATP2B
<b>Function</b>	This magnesium-dependent enzyme catalyzes the hydrolysis of ATP coupled with the translocation of calcium from the cytosol to the sarcoplasmic reticulum lumen (PubMed: <a href="#">12542527</a> , PubMed: <a href="#">16402920</a> ). Involved in autophagy in response to starvation. Upon interaction with VMP1 and activation, controls ER-isolation membrane contacts for autophagosome formation (PubMed: <a href="#">28890335</a> ). Also modulates ER contacts with lipid droplets, mitochondria and endosomes (PubMed: <a href="#">28890335</a> ). In coordination with FLVCR2 mediates heme-stimulated switching from mitochondrial ATP synthesis to thermogenesis (By similarity).
<b>Cellular Location</b>	Endoplasmic reticulum membrane {ECO:0000250 UniProtKB:O55143}; Multi-pass membrane protein. Sarcoplasmic reticulum membrane; Multi-pass membrane protein. Note=Colocalizes with FLVCR2 at the mitochondrial-ER contact junction. {ECO:0000250 UniProtKB:O55143}
<b>Tissue Location</b>	Isoform 1 is widely expressed in smooth muscle and nonmuscle tissues such as in adult skin epidermis, with highest expression in liver, pancreas and lung, and intermediate expression in brain, kidney and placenta. Also expressed at lower levels in heart and skeletal muscle. Isoforms 2 and 3 are highly

expressed in the heart and slow twitch skeletal muscle. Expression of isoform 3 is predominantly restricted to cardiomyocytes and in close proximity to the sarcolemma Both isoforms are mildly expressed in lung, kidney, liver, pancreas and placenta. Expression of isoform 3 is amplified during monocytic differentiation and also observed in the fetal heart

## Images



Please note: All products are 'FOR RESEARCH USE ONLY. NOT FOR USE IN DIAGNOSTIC OR THERAPEUTIC PROCEDURES'.