

SGSM1 Rabbit mAb

Catalog # AP76077

Product Information

Application	WB, ICC
Primary Accession	Q2NKG1
Reactivity	Human
Host	Rabbit
Clonality	Monoclonal Antibody
Calculated MW	129718

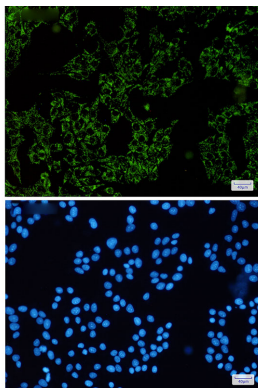
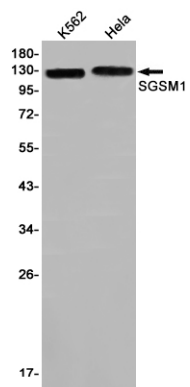
Additional Information

Gene ID	129049
Other Names	SGSM1
Dilution	WB~~1/500-1/1000 ICC~~N/A
Format	50mM Tris-Glycine(pH 7.4), 0.15M NaCl, 40%Glycerol, 0.01% sodium azide and 0.05% BSA.

Protein Information

Name	SGSM1
Synonyms	KIAA1941, RUTBC2
Function	Interacts with numerous Rab family members, functioning as Rab effector for some, and as GTPase activator for others. Promotes GTP hydrolysis by RAB34 and RAB36. Probably functions as a GTPase effector with RAB9A and RAB9B; does not stimulate GTP hydrolysis with RAB9A and RAB9B.
Cellular Location	Golgi apparatus, trans-Golgi network {ECO:0000250 UniProtKB:Q8BPQ7}. Cytoplasmic vesicle membrane; Peripheral membrane protein. Cytoplasm Note=Recruited to cytoplasmic vesicle membranes via its interaction with Rab family members, such as RAB9A.
Tissue Location	Mainly expressed in brain, heart and testis.

Images



Please note: All products are 'FOR RESEARCH USE ONLY. NOT FOR USE IN DIAGNOSTIC OR THERAPEUTIC PROCEDURES'.