

SIRP alpha Rabbit mAb

Catalog # AP76083

Product Information

Application	WB
Primary Accession	P78324
Reactivity	Mouse, Rat
Host	Rabbit
Clonality	Monoclonal Antibody
Calculated MW	54967

Additional Information

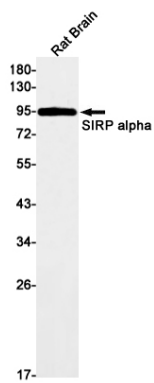
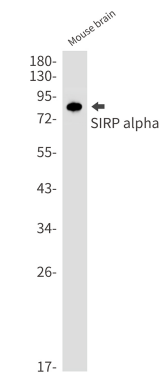
Gene ID	140885
Other Names	SIRPA
Dilution	WB~~1/500-1/1000
Format	Liquid

Protein Information

Name	SIRPA
Synonyms	BIT, MFR, MYD1, PTPNS1, SHPS1, SIRP
Function	<p>Immunoglobulin-like cell surface receptor for CD47. Acts as docking protein and induces translocation of PTPN6, PTPN11 and other binding partners from the cytosol to the plasma membrane. Supports adhesion of cerebellar neurons, neurite outgrowth and glial cell attachment. May play a key role in intracellular signaling during synaptogenesis and in synaptic function (By similarity). Involved in the negative regulation of receptor tyrosine kinase-coupled cellular responses induced by cell adhesion, growth factors or insulin. Mediates negative regulation of phagocytosis, mast cell activation and dendritic cell activation. CD47 binding prevents maturation of immature dendritic cells and inhibits cytokine production by mature dendritic cells. Plays a role in antiviral immunity and limits new world arenavirus infection by decreasing virus internalization (By similarity). Receptor for THBS1 (PubMed:24511121). Interaction with THBS1 stimulates phosphorylation of SIRPA (By similarity). In response to THBS1, involved in ROS signaling in non-phagocytic cells, stimulating NADPH oxidase-derived ROS production (PubMed:24511121).</p>
Cellular Location	Membrane; Single-pass type I membrane protein.
Tissue Location	Ubiquitous. Highly expressed in brain. Detected on myeloid cells, but not

T-cells. Detected at lower levels in heart, placenta, lung, testis, ovary, colon, liver, small intestine, prostate, spleen, kidney, skeletal muscle and pancreas

Images



Please note: All products are 'FOR RESEARCH USE ONLY. NOT FOR USE IN DIAGNOSTIC OR THERAPEUTIC PROCEDURES'.