

SLBP Rabbit mAb

Catalog # AP76090

Product Information

Application	WB, IHC-P, IHC-F, IP, ICC
Primary Accession	Q14493
Reactivity	Human
Host	Rabbit
Clonality	Monoclonal Antibody
Calculated MW	31286

Additional Information

Gene ID	7884
Other Names	SLBP
Dilution	WB~~1/500-1/1000 IHC-P~~N/A IHC-F~~N/A IP~~N/A ICC~~N/A
Format	50mM Tris-Glycine(pH 7.4), 0.15M NaCl, 40%Glycerol, 0.01% sodium azide and 0.05% BSA.

Protein Information

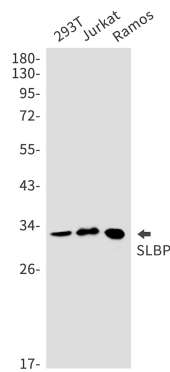
Name	SLBP
Synonyms	HBP
Function	<p>RNA-binding protein involved in the histone pre-mRNA processing (PubMed:12588979, PubMed:19155325, PubMed:8957003, PubMed:9049306). Binds the stem-loop structure of replication-dependent histone pre-mRNAs and contributes to efficient 3'-end processing by stabilizing the complex between histone pre-mRNA and U7 small nuclear ribonucleoprotein (snRNP), via the histone downstream element (HDE) (PubMed:12588979, PubMed:19155325, PubMed:8957003, PubMed:9049306). Plays an important role in targeting mature histone mRNA from the nucleus to the cytoplasm and to the translation machinery (PubMed:12588979, PubMed:19155325, PubMed:8957003, PubMed:9049306). Stabilizes mature histone mRNA and could be involved in cell-cycle regulation of histone gene expression (PubMed:12588979, PubMed:19155325, PubMed:8957003, PubMed:9049306). Involved in the mechanism by which growing oocytes accumulate histone proteins that support early embryogenesis (By similarity). Binds to the 5' side of the stem-loop structure of histone pre-mRNAs (By similarity).</p>
Cellular Location	Cytoplasm. Nucleus. Note=Polyribosome-associated (PubMed:12588979). Localizes predominantly in the nucleus at the G1/G2 phases and the beginning of S phase (PubMed:12588979). Through the S phase, partially

redistributes to the cytoplasm (PubMed:12588979) Binding to histone mRNA is necessary for cytoplasmic localization (PubMed:12588979). Shuttles between the nucleus and the cytoplasm (PubMed:15829567). Imported in the nucleus by the Importin alpha/Importin beta receptor (PubMed:15829567)

Tissue Location

Widely expressed..

Images



Please note: All products are 'FOR RESEARCH USE ONLY. NOT FOR USE IN DIAGNOSTIC OR THERAPEUTIC PROCEDURES'.