

SLC25A12 Rabbit mAb

Catalog # AP76091

Product Information

Application	WB, IP
Primary Accession	O75746
Reactivity	Rat, Human, Mouse
Host	Rabbit
Clonality	Monoclonal Antibody
Isotype	IgG
Conjugate	Unconjugated
Purification	Affinity Purified
Calculated MW	75 KDa

Additional Information

Other Names	SLC25A12
Dilution	WB~~1:500-1:1000 IP~~1:20-1:50
Format	Liquid in 50mM Tris-Glycine(pH 7.4), 0.15M NaCl, 40%Glycerol, 0.01% sodium azide and 0.05% BSA.
Storage	Store at 4°C short term. Aliquot and store at -20°C long term. Avoid freeze/thaw cycles.

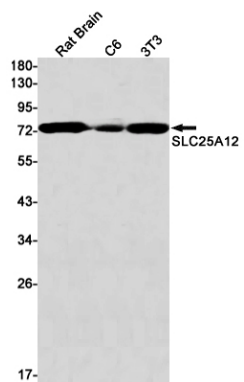
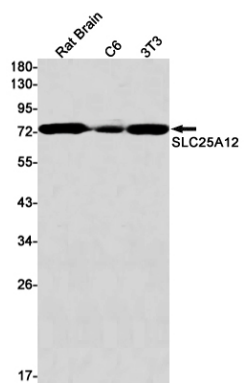
Protein Information

Background

Mitochondrial and calcium-binding carrier that catalyzes the calcium-dependent exchange of cytoplasmic glutamate with mitochondrial aspartate across the mitochondrial inner membrane (PubMed:11566871, PubMed:25410934). May have a function in the urea cycle (PubMed:11566871).

Images

Western blot analysis of SLC25A12 in rat Brain, C6, 3T3 lysates using SLC25A12 antibody.



Please note: All products are 'FOR RESEARCH USE ONLY. NOT FOR USE IN DIAGNOSTIC OR THERAPEUTIC PROCEDURES'.